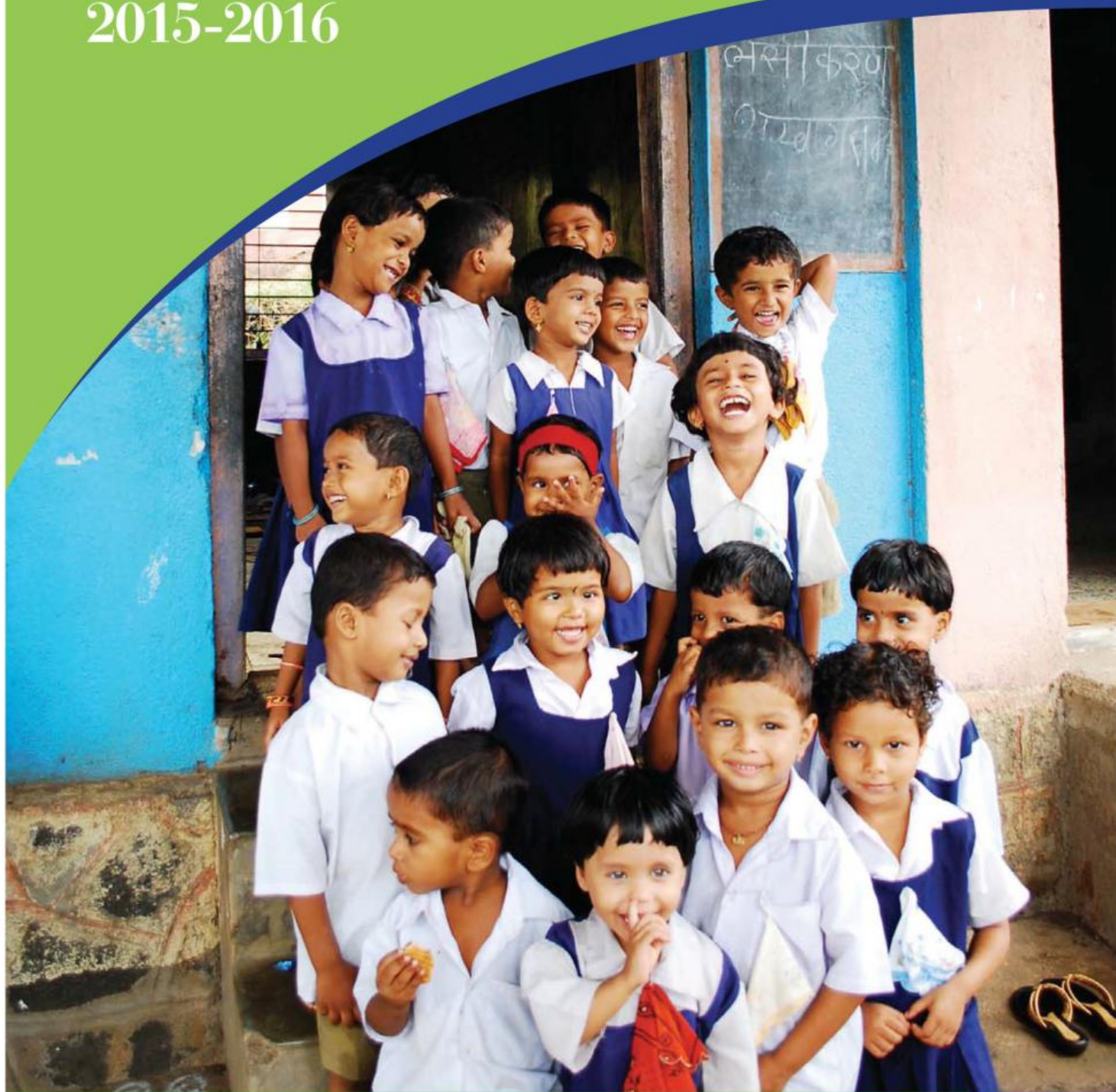


# THE P.R.I.D.E India

Annual Report  
2015-2016





## Mrs. Vipula Kadri Founder (1936-2007)

Our inspiring founder Mrs. Vipula Kadri led an altruistic and philanthropic life, transforming the lives of thousands of marginalized people who are deprived of their rights. To the people in need of education, livelihood, rehabilitation and more, she always extended her helping hand. She founded the P.R.I.D.E India in 1982, along with sister organizations Save The Children India and WISE in 1988.



## 4 EXECUTIVE SUMMARY

## 6 OUR GOVERNING PHILOSOPHY

## OUR WORK

<b>1. Child- Centric Holistic Development programme:</b>	<b>10</b>
i. ECCD (Early Childhood Care and Development)	12
ii. Education	14
iii. Child Protection and Participation	16
<b>2. Women Empowerment</b>	<b>18</b>
i. Vipula Credit Co-operative Society	21
ii. Self- Help Group (SHG)	21
<b>3. Livelihood Development</b>	<b>22</b>
<b>4. Ideal Village Programme</b>	<b>26</b>
<b>5. Health and Sanitation</b>	<b>32</b>
i. General Health & Hygiene programmes	34
ii. Sastur Project of Action Research Services through Hospitals (SPARSH)	36
iii. HIV/AIDS Care & Support Programme	38
iv. Outreach Activities	40
<b>6. Relief and Rehabilitation</b>	<b>42</b>
<b>7. Other Initiatives</b>	<b>45</b>

## 47 THE YEAR AT A GLANCE

## 51 FINANCIAL STATEMENT

## 53 PARTNERS IN CHANGE

# Contents



# Board of Trustees

 <b>Mr. I. M. Kadri</b> <b>Patron</b> Founder and Chairperson, IM Kadri Consultants	 <b>Mrs. Monisha Shetty</b> <b>Vice President</b> Creative Director —R House, Director —S2 Realty and Developers Pvt Ltd.
 <b>Mrs. Isha Mehra</b> <b>President &amp; Managing Trustee</b> Entrepreneur	 <b>Mr. Madhavan Menon</b> <b>Trustee</b> Managing Director, Thomas Cook (India) Ltd.
 <b>Ms. Nirja Mattoo</b> <b>Secretary</b> Chairperson, Centre for Development of Corporate Citizenship (DOCC), S. P. Jain Institute of Management & Research	 <b>Ms. Rekha Rajagopal</b> <b>Trustee</b> Advocate, High Court
 <b>Mr. Ajay Srinivasan</b> <b>Treasurer</b> CEO, Financial Services and Director, Corporate Strategy and Business Development, Aditya Birla Group	 <b>Mr. Yogesh Mehra</b> <b>Trustee</b> Fund Manager, Yogesh Mehra Associate
 <b>Mr. Rahul Kadri</b> <b>Vice President</b> Director, Kadri Consultants Pvt. Ltd. and Partner, I. M. Kadri Architects	 <b>Dr. Gajanan Velhal</b> <b>Trustee</b> Professor, Dept. of Community Medicine, Seth G S Medical College & K E M Hospital
 <b>Mr. Nikunj Jhaveri</b> <b>Trustee</b> Chairman & Founder Systems Plus Group of Companies	

## Note from the President

Dear Friends,

The year 2015-16 has been another rewarding year for us. We have focused on making large scale changes, emphasizing on team work at all levels and collaborating with various stakeholders to create a meaningful impact.

Among our greatest triumphs this year, is the change in approach in our Ideal Village Programme. In the preliminary years, the programme focused extensively on improving health & sanitation aspects of a community which resulted in 15 intervention villages being awarded Nirmal Gram Puraskar. Eventually the other aspects of development to improve social indicators were implemented in those villages. The programme now has evolved into taking a holistic development approach in a more structured way. With this transformation we are able to enhance the well-being of our community in a comprehensive manner by empowering the community to take ownership of village development process.

Our first Mobile Medical Unit (MMU) launched in 2011, was much appreciated for its exemplary healthcare services provided to remote villages. Following its success, we initiated outreach programme focusing on preventive health and clinical services through two additional MMU's this year. We are glad to report that these MMU's have been well received by our communities in 48 villages.

Having worked in the sphere of early childhood care and development (ECCD) for more than 30 years, we yearned to share our understanding to a larger audience in a structure manner. With this aim, we compiled our training module for ECCD training. We are pleased to announce that our two years of toil reaped fruit this year and we trained 536 anganwadi workers/ village level volunteers and 25 Staff of a partner NGO as master trainers reaching out to more children in the early years across 6 blocks of Raigad district. The results have been amplified by partnering with local NGOs who share our vision to improve the welfare of our communities.

In an effort to increase opportunities for participation among youths, we established the Youth Resource Centre (YRC) in 20 villages. The well-equipped YRC includes recreational and sports

equipment and boasts of a plethora of career guidance books enabling youth access resources which will enhance their employability and promote overall development.

We deepened our commitment to fuel our enthusiasm to serve our communities by expanding our core programmes. With deep pride we share with you our Annual Report for this year, a reflection of how far we have come since the mission of empowering rural communities was established.

I thank all our supporter, donors, staff, beneficiaries and well-wishers for making it possible for us to do what we could. I sincerely thank the board of trustees for their enthusiasm, dedication and undying passion towards PRIDE's cause. I would like to specially thank our donors Child Fund International, USA, Systems Plus, Save The Children India, Society to Heal Aid Restore Educate- SHARE, Organization Functioning For Eytham's Respect- OFFER, Network of Maharashtra People Living with HIV/AIDS, SPYN Welfare Foundation, Akzo Nobel India Limited, TATA Social Welfare Trust, DRT- Anthea Aroma Chemicals Pvt. Ltd, all our partners of *Araaish*. I hope to have them as our long term supporters in our journey to create sustainable change within our communities.

The PRIDE team is all geared up for another challenging year ahead of us, with many lives to be reached and many tough steps to be taken to work towards our vision of creating an equal and just society for our communities.

We look forward to your support!



**Mrs. Isha Mehra**  
**President & Managing Trustee**  
**The PRIDE India**





# Vision

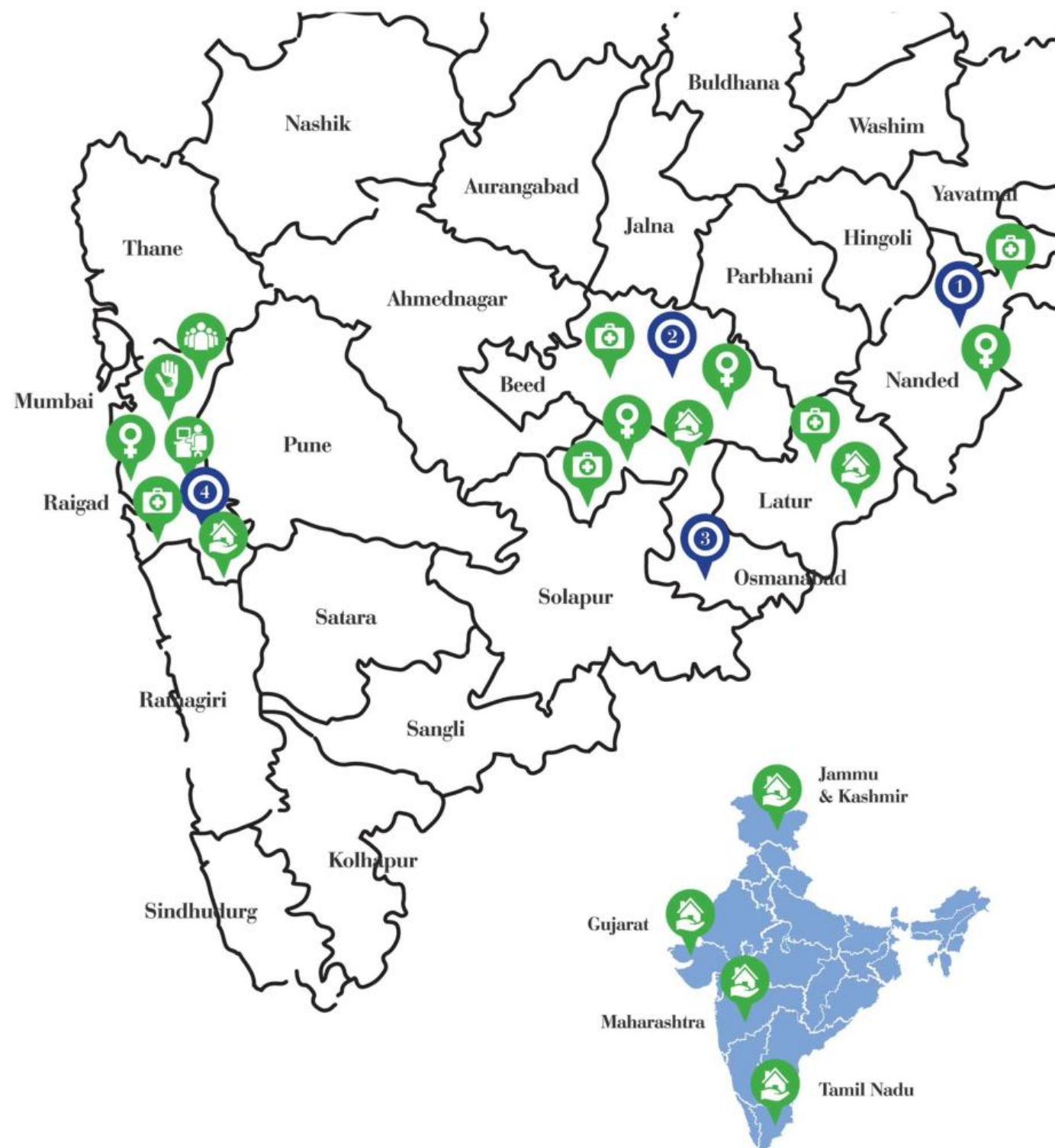
A just society based on equal opportunities and human rights

# Mission

To facilitate the process of empowering marginalized communities to lead a life of dignity and self respect by working with stakeholders and advocating for policy changes







- |   |   |   |                                |  |                         |
|---|---|---|--------------------------------|--|-------------------------|
|  | <b>Child Centric Holistic Development Program</b> |  | <b>Ideal Village Programme</b> |  | <b>Regional Offices</b> |
|  | <b>Relief and Rehabilitation</b>                  |  | <b>Livelihood Development</b>  |  |                         |
|  | <b>Women Empowerment</b>                          |  | <b>Health &amp; Sanitation</b> |  |                         |
|   |   |   |                                |  | 1. Nanded               |
|   |   |   |                                |  | 2. Beed                 |
|   |   |   |                                |  | 3. Osmanabad            |
|   |   |   |                                |  | 4. Raigad               |

# Our Work

The P.R.I.D.E. India (Planning Rural-Urban Development through Education) is a non-governmental organization, registered in 1982 under Societies Registration Act, 1860. With a mission to facilitate the process of empowering marginalized communities, PRIDE works to develop the capacities of the most under-served communities in rural Maharashtra. We believe, for development to be sustainable in an extremely vulnerable background it is imperative to use a all-inclusive model encompassing all constituents. Therefore, our integrated rural development approach focuses on simultaneously delivering a variety of programmes with the objective of generating sustainable change. Our founder, Mrs. Vipula Kadri, considered family as a unit of development and promoted an integrated approach, focusing on Early Childhood Care and Development, Education, Women's Empowerment, Livelihood and Health. Till date we have reached out to more than 36,000 children, 50,000 women in 234 villages each year. The programme, with widespread presence in Osmanabad and Raigad districts is organized along the verticals of child-centric holistic development, women empowerment, livelihood, relief & rehabilitation, health & sanitation and ideal village programme.



## Child Centric Holistic Development Program

Early Childhood Care and Development (ECCD)  
Education  
Child Protection and participation



## Women Empowerment

Vipula Credit Co-operative Society  
Self Help Groups (SHG)



## Livelihood Development

Skill based vocational Training  
Linkages



## Ideal Village Programme

Personal Development  
Human Development  
Social Development  
Economic Development



## Health & Sanitation

Health & Hygiene (H&H) Programmes  
SPARSH hospital  
HIV/AIDS care & support (CSC&CCC)  
Outreach programmes



## Relief and Rehabilitation

Medical & Material Aid  
Disaster Management Trainings



A group of children are sitting on a stone wall in front of a school building. The children are of various ages, from young toddlers to older children. They are wearing school uniforms, including white shirts and blue trousers. One child in the foreground is smiling at the camera. The background shows a school building with a yellow wall and a doorway. The overall scene is outdoors, with trees and a clear sky visible in the distance.

## Child- Centric Holistic Development programme

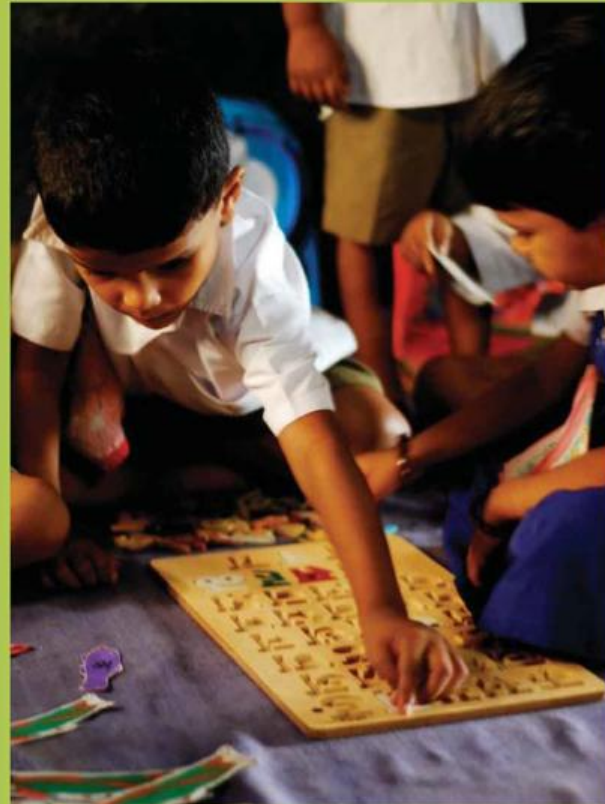
Children are the building blocks of a community and of any nation. Lack of proper nutrition, ill health and inadequate care undermines their physical, social and psychological growth. PRIDE focuses on rural development keeping children as the centre of the programmes, this helps break the intergenerational cycle of poverty through programmes which focus on development of children of all age groups.

Our Child Centric Holistic Development Programme includes :

- Early Childhood Care and Development
- Education
- Child Protection and Participation

1





## ECCD (Early Childhood Care And Development)

### PROGRAMME OVERVIEW

Early childhood is the critical formative years of a child. Research studies have proved that more than 80% of the brain develops before the age of 6 years. PRIDE India's approach to the ECCD programme is child friendly, family focused and community based. It consists of a two dimensional approach which focuses on improving the physical and mental well-being of the child. We cater to children between birth to 3 years through our home based interventions: the centre-based interventions focus on 3 to 6 year olds.

The home based intervention aims to enrich the 'home or family environment' to enable holistic development of the young child. Through regular home visits and trainings we focus on making the care giver alert and aware of all domains of development viz physical, social and psychological development.

PRIDE assists in building the capacity of the teachers and enhancing the learning environment of the children by promoting creative educational materials, and organizing medical camps thus providing an enabling environment for the children to grow. With the objective of providing a practical experience PRIDE has set up its own balwadis, as a model centres which implements the best practices of ECCD. With over 30 years of experience in the early childhood care, the organization with its demonstrated pedagogy, reached out to a larger number of children by training the NGO partners as trainers and strengthening the anganwadi's across 6 blocks of Raigad district by training the anganwadi workers and village level volunteers. We plan to develop PRIDE as a resource agency in sharing the pedagogy with many more people and thus reach out to larger geography.

### ACCOMPLISHMENTS

**459** Caregivers from 25 villages were trained in the components of Early Childhood Care and Development (ECCD) in 18 trainings conducted

**25** staff of a partner NGO trained as master trainers in ECCD helping us reach more number of children in the early years

**50** Anganwadi workers were trained in ECCD best practices of home based care intervention, centre based care and monitoring of age appropriate developmental indicators.

**157** mothers were provided pre or post natal care ensuring safe and healthy pregnancy and delivery

**5508** follow up visits were conducted to support the care giver in implementing the knowledge imparted during training.

**363** children between birth to 24 months were immunized timely with the assistance of government agencies

**706** children benefitted through centre based intervention run in collaboration with the government anganwadi's

**5** anganwadi's and 1 balwadi were provided material, equipment and training support

# 536



anganwadi workers and village volunteers underwent PRIDE India's intensive 6-day training in partnership with a local NGO



## MUTHAVLI SCHOOL - A ROLE MODEL

The Muthavli higher education school located in Muthavali village, 4 km away from Mahad city in Raigad is one of the best role model for schools in its area and surrounding villages.

Prior to 2009, the school only had 1st to 4th grade. Thus, for further education students had to take admission in the high school at Chichode village which is one and half kilometre away from the Muthavali village. Travelling to the other school was very difficult as there was no proper transport facility, these hassles discouraged children from pursuing higher education. With an aim to transform this scenario the Muthavali school management committee and teachers took initiative to send application to zilla parishad for extending their school till 7th grade. Their hardwork and persistence paid off when in 2010 the zilla parishad gave permission for the extension. Their joy saw no bounds when along with the permission the government even constructed the additional classrooms under the Sarva Shiksha Abhiyan in 2011.

Our team helped the school management committee members and teachers take initiative to develop a "child friendly" school which focuses on holistic learning and understanding of environment. To further



this objective, the local community also gave financial & non financial support. Additionally, the grampanchayat contributed to construct school walls and the local community members, parents, teachers and management committee members contributed Rs 3,50,000/- for developing the school. Last year the government conducted an assessment of the school and undertook an ISO certification process. Today, after being recognised as an "ideal school" by the government and having an ISO certification, this school is a proud role model for other schools in the area. Parents are aware that their children study in an exemplary institution. Even though unlettered themselves, they show a keen interest in the school activities. The school has a school management committee that meets once a month to interact with teachers and students. A member of the club said, *"My son and daughter study here. They say they can happily miss a meal but cannot miss school even a single day. The school has had a magical effect on my children and they now talk of going to college."*

### SIGNIFICANT CHANGES IN THE SCHOOL BY 2015:

- Colourful painted walls
- Attractive learning environment
- Computer class room with e-learning facility,
- Science laboratory, library
- Playing ground.

## EDUCATION

### PROGRAMME OVERVIEW

Education and the importance of pursuing post-secondary education are vital to the development of our children. PRIDE endeavors to create a safe learning environment to ensure that children go to school and continue to enjoy the experience of learning. PRIDE's study centres and Child Resource Centres(CRC) help us further our goal to promote an interactive and all rounded learning atmosphere.

Children living in rural areas often drop out of the schools because of various social factors, one of them being unfavourable environment to study at home. In order to help our children tackle such issues PRIDE has set up study centres which provide after school support. Our 12 study centers located in 12 villages provides an after school support and engages the children in a positive learning environment. There has been a good response on usage of books by school children across 53 libraries set up in zilla parishad schools initiated by us in the year 2014. This has been possible with the reading period strategy of demonstration of reading activities and motivating teachers to conduct reading period activities.

We believe, for a child to grow into a healthy adult s/he needs a well-rounded programme encompassing emotional, physical, relational, intellectual and creative components. The Child Resource Centre provides our children the opportunity to engage themselves in arts, sports and music giving back the right to enjoy their childhood. Equipped with musical instruments, sports equipment, library and computers, this centre is open to all children every weekend.

### ACCOMPLISHMENTS

**54** children from Mahad participated in an education tour to Nehru Science Centre which displayed interactive science exhibit. They also visited Bal Praphulta an NGO working on child rights

**115** boys and **139** girls were taken for an exposure visit to the local police station, bank, panchayat samiti, primary healthcare centre, post office, and the tehsil karyalaya to understand the importance and role of these organisations/bodies and type of services they provide.

**3323** children benefitted from the 53 libraries initiated in primary school. The libraries witnessing an increased check in and check out of books by children.

**601** students were provided educational materials and guidance for education

**610** children in 8 villages participated in the activities of child resource centres Educational Achievements

- 100% result in academic performance in 1st to 9th Std in all intervention villages
- 93.51% students passed in S.S.C
- 83.42% students passed in H.S.C

# 396



children benefitted through our after school support programme at the study centres





## CHILD PROTECTION AND PARTICIPATION

### PROGRAMME OVERVIEW

When children and adolescents are made a part of the social development processes they can make a greater contribution to the community building process. Therefore, PRIDE has made significant progress since inception towards establishing a child friendly environment which promotes their safety, security and independence. However, significant challenges remain to enhance protection and to increase opportunities for meaningful participation of children in realizing their rights. Child clubs provide a platform for our children to express and discuss issues that directly effect a child's development. The 30 clubs regularly conduct events such as competitions, rallies, and discussions on social issues and encourages children to engage in stimulating activities.

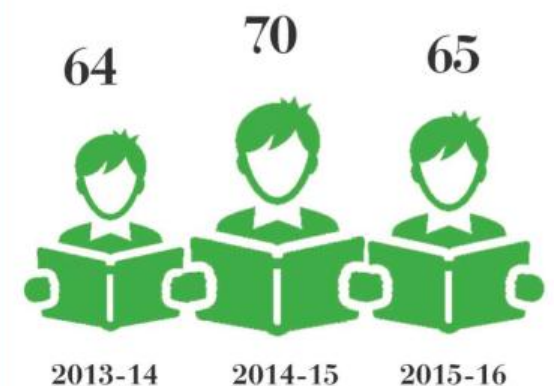
### MUKTASHALA

Migration presents both opportunities and challenges for communities and individuals. Muktashala initiated in 1995 in Kothurde village is an attempt to support children whose parents migrate to urban areas in search of work. It ensures that the child has a safe place to stay so that they are able to continue their formal schooling while the parents are at work. The well-equipped residential facility provides all the essential services such as nutrition, healthcare, recreation and after school support. The goal is to minimize the dropout rate of these children in school by providing a safe place which ensures their overall development and growth. Children from Muktashala are also encouraged to participate in village level programmes such as cleanliness drives, tree plantation and hygiene promotion programmes.

### ACCOMPLISHMENTS

**1061** children participated in the activities of 30 child clubs instituted in 24 villages  
**30** child clubs organized a rally on importance of higher education in 25 villages  
**78** children from school management committees were sensitized on the responsibilities of a school management committee and their duty  
**39** trainings were conducted for school management committees about their role in making schools child friendly and to increase parents' participation  
**65** children were part of the Muktashala programmes which provided them essential services including education, healthcare, nutrition and educational sponsorships

### NUMBER OF CHILDREN BENEFITTED THROUGH MUKTASHALA







## Women Empowerment

Empowering women to participate fully in a society is essential to building stronger families and communities. PRIDE programmes ensure that women in our communities not only become economically independent but socially active and aware citizens of society. We do this through our two major initiatives the Self Help Groups and the Vipula Credit Co-operative Society.

The following are the core principles that apply to all P.R.I.D.E.'s micro-finance programs

- Serve the poorest clients, with a focus on women
- Promote solidarity and group guarantees
- Savings Mobilization
- Support capacity building/training
- Increase productive assets
- Ensure a child-focused perspective
- Promote culturally appropriate program approaches
- Plan for sustainability

2





### \* **KIRAN SHINES AGAINST ALL ODDS**

As an energetic young girl, Kiran excelled in her studies and extracurricular activities. She was a regular at school and a star performer at sports. Her parents worked as daily wage labourers in the agricultural farm and their income was just enough for the family to survive. Her father's sudden demise when Kiran was 4 years, left the family in a tough situation. Her mother struggled to make ends meet with the little income that she received and soon found it difficult to continue Kiran's and her siblings' education.

Kiran was identified by the PRIDE team as an eligible candidate for our Child Sponsorship programme under which she received educational material, after school support, participation in extracurricular activities and healthcare. Her keen interest in teaching lead her to undertake various trainings related to Health, Hygiene, Child Development and Nutrition etc and helped her attain a job as an ASHA and later as an Anganwadi teacher in 2011 in the government ICDS programme.

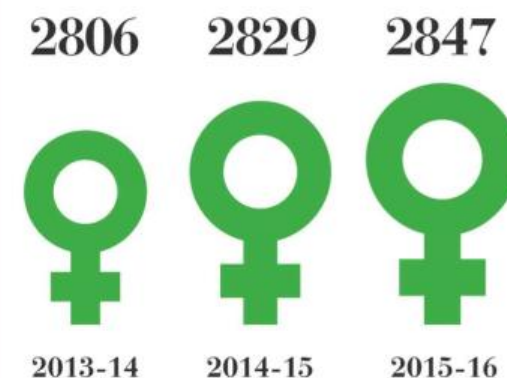
We are proud to see our little Kiran grow into a confident and passionate young lady, who is positively impacting the lives of many little children and their mothers!

*\* Name changed to protect privacy*

## VIPULA CREDIT CO-OPERATIVE SOCIETY

In rural areas financial services of the formal banking system traditionally remained inaccessible to a majority of the poorer sections of the rural population, especially women. Therefore to help them attain economic independence Vipula Credit Co-operative was established; a women's cooperative based on the principle of mutual help. Set up in 1989 with 251 members, it offers credit facility to the rural women for their personal, social necessities like education, health, entrepreneurship etc. With 2847 listed members, the co-operative society is a registered government body. PRIDE guides the members in legal matters, audit and conducts periodic financial literacy sessions to keep them updated about the latest information from the industry.

### GROWTH OF SHAREHOLDERS



## SELF- HELP GROUP (SHG)

When PRIDE first initiated its work in rural Maharashtra it realized the plight of its communities in the hands of the moneylenders. The moneylenders charged up to 10% monthly and emotionally tormented their customers for repayment. With the success of the Vipula Credit Co-operative Society we realized that mobilizing more smaller groups would help to meet the increasing demand for finance. Thus, in 1998 we mobilized the first group of 850 women to set up 50 Self Help Groups (SHG's). We are proud to report that at present all our 230 SHG's are registered with nationalized banks and are able to avail loans at 4% p.a. Their savings have grown to more than 30 lakhs and the loans disbursed are maximum of up to Rs. 10,000. All SHG's are monitored by our team for regularity of meetings, maintenance of records, loan disbursement, repayment and other requirements to help them adhere to their constitution.

The SHG's also play an important role in positive development of their members and the communities by organizing healthy discussions on topics related to personal and community welfare. Furthermore, they participate in all village level programmes such as festival celebrations, melas, and celebration of important days.

We also initiated livelihood programmes for our SHG members. This year 61 bamboo saplings were planted by 78 SHG members. These plantation programmes help add economic and environmental value to the community.









## PROGRAMME OVERVIEW

The goal of PRIDE's livelihood programme is to nurture and convert a pool of unskilled rural youth aged 15-24 years into a valuable resource for the community. To further this goal, we help them achieve their aspirations by enabling them to acquire skills and encourage them to start their own enterprises. We conduct customized trainings for young women and men keeping their interests and requirements as our priority. Additionally, we establish linkages with other training institutes to be able to serve the needs of our communities in a structured manner.

## PROGRAMME FOCUS

1. Vocational training for youth
2. Soft skill training for job reeliners
3. Support for micro enterprises
4. Farm based livelihood through bamboo resource development in wastelands

## CASE STUDY

"Thank you PRIDE India, I will make you proud one day" says a grateful Deepa\* "A 24 year old, Deepa is the eldest daughter of Vipul's\* three children. Vipul, a farmer and his wife a homemaker, struggled to make ends meet with the modest monthly wages they earned. At the peak of a financial crisis that hit the family, Vipul decided to discontinue Deepa's education. Being a bright student Deepa was unhappy with this news. A disheartened Deepa's call was heard by one of our outreach workers' regular community visits. Through our Child Sponsorship programme she received every support to continue her education including financial resources and educational materials. A bright student in her school, Deepa excelled through her early academic years. Soon after her 12th grade we enrolled her in the (Auxillary Nurse Midwife )ANM course. Deepa sucessfully completed the course and now works at a private hospital. We are proud to see Deepa grow in all aspects and wish her the best for future!

## ACCOMPLISHMENTS

**423** adolescent girls were trained in beauty parlor practices, making imitation jewelry, , wallpaper and knitting  
**23** youths attended an english speaking workshop organized by our team with the objective to enhance the employability of these youths  
**30** youths were enrolled in a computer course to upgrade their IT skills  
**909** youths attended an awareness programme on government schemes with regard to provision for youth employment  
**371** adolescent girls participated in the life skills programme which helped them develop their psychosocial competencies and interpersonal skills

**26**

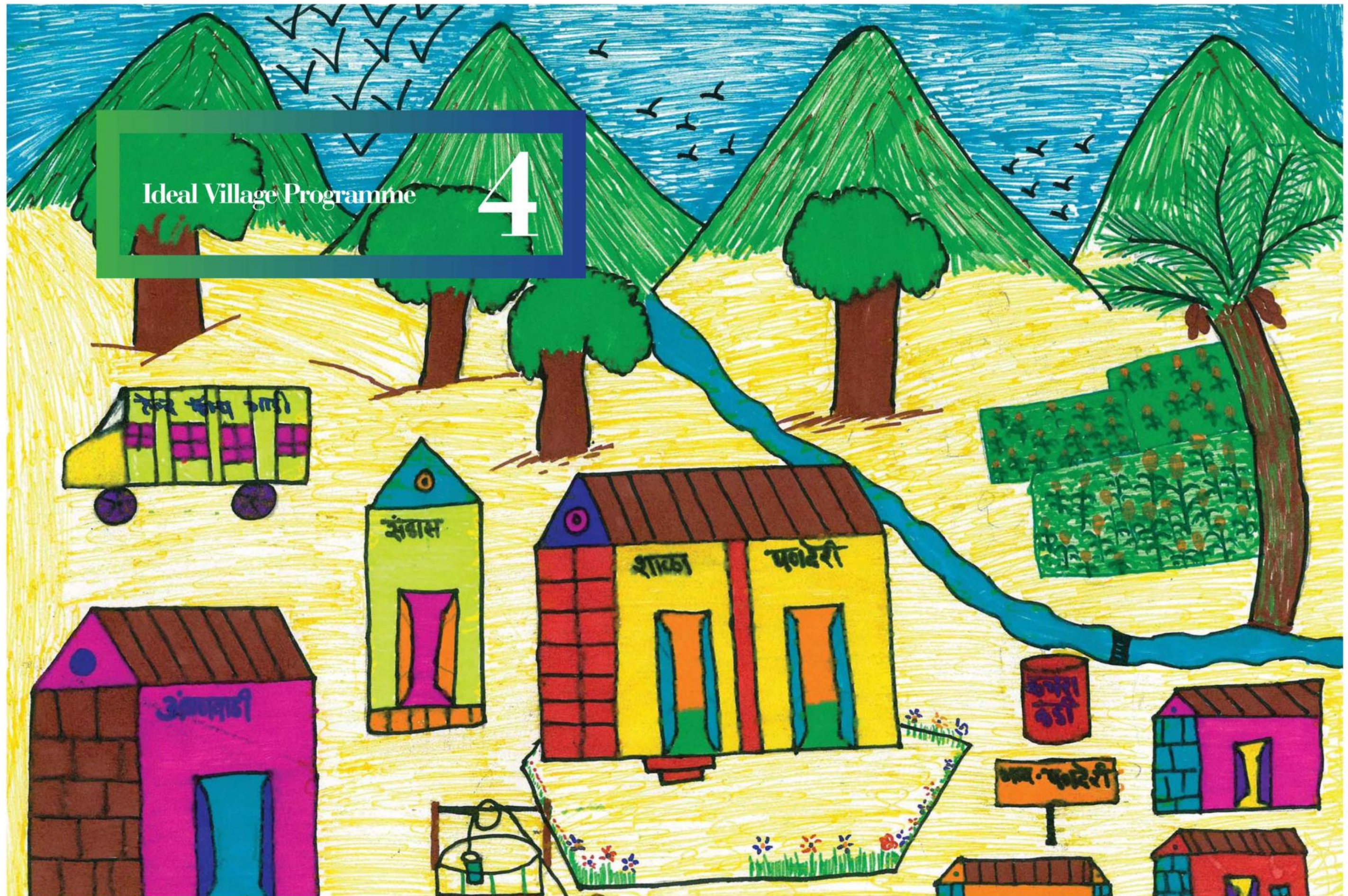
youths were linked to the Industrial Training Institute (ITI) for skill development training. Additionally, they also received financial support to encourage them to continue their training.





# Ideal Village Programme

# 4





## PROGRAMME OVERVIEW

The Ideal Village programme of PRIDE was first initiated in 2004 in Varandoli village of Raigad district. With major emphasis on health and sanitation, the programme in its initial years emulated the objectives of Nirmal Gram Yojna of the Central Government. PRIDE focused on improving health indicators such as mortality and morbidity rates, reproductive and child health, simultaneously working on improving the sanitation and hygiene aspects through behavior change programmes. Over the years we realized, to make a sustainable change we need to include other thematic areas for holistic development of individuals and villagers. PRIDE therefore aimed to develop the village as an institution where the community takes ownership of their personal well-being and of their surroundings.

This insight has gradually evolved into the present Ideal Village Programme. The programme is classified into personal, human, social and economic domains. Further, we have developed indicators to measure the progress in each domain. We emphasize individual participation, community involvement and participation of government to develop good governance practices. We believe that integrated development of villages will be primarily achieved through implementation of existing scheme of central and state governments, in a convergent manner along with other funding support and community involvement. This year we implemented the ideal village programme in two villages : Panderi and Adiste. We are happy to report that in both the villages the communities have taken ownership of the programme and we see gradual changes taking place. Both the villages have influenced state transport to initiate bus services in their village ensuring easy travel for children to secondary school. Additionally, the village institutions have also been strengthened with norms formed and being followed. The village cleanliness drive has also been taking place regularly in the villages. We have been successful in making the youth take ownership of their villages.

## ACCOMPLISHMENTS

**109** students benefit from the 2 study centers where children receive after school academic support

**20** participants from 2 School Management Committees were given training in child rights and were made aware about their roles and responsibilities towards schools

**115** members of our 2 youth groups participated in a youth festival which saw activities such as dance, cultural and sports competitions

**2** Village Resource centres were set up which provide facilities of gymnasium for the youth fully equipped with sport equipment

**235** women from our SHG's participated in a cultural activity celebrating local traditions and building relationships over variety of social activities

**30** members from the 2 Village committees met every month to discuss the future plans and activities taking place at the village level and to designate roles & responsibility to each member

**13** Self Help Groups have been mobilized in the 2 villages comprising 147 members

**73** women from the SHG groups participated in a livelihood project. The members were given bamboo saplings and were encouraged to grow indigenous bamboo crop which would be a source of income for them

Till date 15 ideal villages of PRIDE have been awarded Nirmal Gram Puraskar by the central government for their exemplary achievements







### DIRECT PROGRAM COST BREAK UP

- Community
- PRIDE India
- Government

33% 14%



53%

### ACCOMPLISHMENTS

**34** toilets were built with financial assistance from PRIDE India and local government  
**49** solar lamps were provided to students to help them continue their studies during the night and 30 solar lanterns were provided to individual households  
**11** stand posts of water were constructed for ensuring clean drinking water for villagers 2 schools were provided potable drinking water vending machines and 40 saplings planted in schools  
**600** tree saplings planted by villagers in 2 villages  
**200** households were provided with kitchen garden kits to promote the practice of growing healthy nutritious foods in their own gardens.  
**72** households were trained to utilize waste water constructively in their kitchen garden  
**121** villagers were benefitted from general health camps organized  
**115** children benefitted with the improvisation of infrastructural facilities including lighting, water facilities, colorful painted walls, first aid kits etc

### Indicators of Ideal Village Programme

#### Personal

Behavioral Change  
 Cleanliness  
 Usage of renewable energy  
 Solid waste management

#### Economic

Livelihoods linkages  
 Job readiness  
 Linking for skill training  
 Linkages with Government schemes

#### Human

Education  
 Health  
 Nutrition

#### Social

Good Governance  
 Woman empowerment  
 Village Resource centre

Ideal Village





Health and Sanitation

5



## GENERAL HEALTH & HYGIENE PROGRAMMES

### PROGRAMME OVERVIEW

This programme aims to create awareness on health and hygiene practices among the women, adolescent girls and school children, help motivate them to use and maintain sanitation facilities at schools and their community surroundings, inculcate better hygienic practices and make the children to understand the importance of keeping the school, home and village premises clean and thus reduce incidences of diseases. It also includes programmes for community members such as cleanliness drives and promotion of kitchen garden in homestead. When sanitation conditions are poor, making improvements in health may have minimal impact on the community. Therefore, PRIDE strives to make a change in every aspect

**"The Adolescent Girls Development programme made me aware of different aspects to lead a healthy life. Being an adolescent it helped me understand the importance of clean and hygienic habits. I also attended the sessions on health & nutrition. The sessions of menstrual hygiene were very informative and we were also given sanitary napkins during the sessions. They were very beneficial as it helped me keep up my attendance in college". A confident young Pooja also attend our beauty parlour course and vows to earn income by opening a parlour in her village.**

**Pooja,**  
Beneficiary, 16 years

### ACCOMPLISHMENTS

**30** villages were sensitized on best practices of health and hygiene to improve sanitization conditions among school going children, adolescent girls and women

**78** meetings were held in schools and **6** meetings at village level to inculcate healthy & clean habits

**304** adolescent girls were sensitized on menstrual health, the importance and use of sanitary pads. Sanitary pads were also distributed to the girls during the sessions to initiate the idea

**25** villages participated in the village cleanliness programme which took place 3-4 times in a year.

**1200** families received kitchen garden kits promoting the idea of growing nutritious food in their own backyards

# 102



toilets were constructed in individual households and schools in 5 villages to encourage healthy environment and promote sanitation





## SASTUR PROJECT OF ACTION RESEARCH SERVICES THROUGH HOSPITALS (SPARSH)

### PROGRAMME OVERVIEW

Sastur Project of Action Research Services through Hospital or SPARSH is a joint venture of PRIDE India & the Government of Maharashtra, set up on 15th June 1996 with the objective to provide quality health care services in remote villages of Maharashtra. Established following a devastating earthquake in Latur, this hospital has grown into a fully fledged multi specialty hospital comprising a variety of services. The facilities include primary healthcare services, reproductive and child healthcare, care & support for people living with HIV and referral services for further medical intervention. This year 625 mothers living below poverty line were identified and linked to government scheme such as Janani Suraksha Yojana, under this scheme Rs.700 was given to pregnant mother as an incentive.

### ACCOMPLISHMENTS

**1286** safe deliveries were conducted, of which 58% were high risk deliveries  
**505** family planning operations were carried out  
**1000** health workers trained in mother and child health in 12 trainings conducted at SPARSH  
**527** Anganwadi teacher's & 100 SHG leaders & health workers were trained in mother & child health from Omerga, Lohara & Tuljapur block  
**1286** pregnant women benefited from the free ambulance services, availing a safe drop back home after delivery  
**1244** pregnant mothers were provided pick up service from their home to SPARSH for ante-natal care.



### SPARSH- A HOPE TO MANY LIKE NIMI\*

Nimi, 30 year old resident of Karajkheda village had experienced tough circumstance during her pregnancy. Karajkheda is a remote village in Lohara district which lacks access to quality healthcare services. After having two cesarean sections for her earlier deliveries, while Nimi was pregnant with her third child she heard about SPARSH hospital. She reached the hospital with several complications, she was severely anemic (HB 7.5gm %) and had increased PIH (Pregnancy induced Hypertension). Nimi complained of pain at stitch site of previous C Section, decreased fetal movements, severe headache, and blurred vision and looked very pale. During investigations the doctor found her blood pressure to be 180/120 mm hg and she was instantaneously admitted. The immediate treatment included two pints whole blood, anti-hypertensive drugs and injections to reduce convulsions. The anesthesiologist was urgently called and she was posted for emergency cesarean section to avoid fetal distress and chances of uterus rupture which would have led both mother and baby at risk. The gynecologist at the hospital undertook the delivery procedure with utmost care and both the mother and baby were discharged hale and hearty. We are proud of our staff who manage such complicated cases everyday so effortlessly and wish Nimi and her baby a bright future!

Recalling the traumatic experience Nimi explained "There is no health facility near my village and the nearest Government health Centre is also 14 kms away. It has poor services with long waiting hours for the doctor. The other private hospital is also 20 kms away. I came to SPARSH because I heard a lot about the good and quality services provided by this hospital. I pray for such services to be available close to my village so that we don't have to travel so much for quality health care."

\* Name changed to protect privacy

Services at SPARSH	Number of Patients who availed the service		
	2013-14	2014-15	2015-16
Out Patient Department (OPD)	65874	76368	77761
In Patient Department (IPD)	4899	4047	4453
Normal delivery	856	937	1070
Caesarean sections	234	282	216
Family planning operations	626	687	505
Minor operation	198	200	600
Major operation	1148	1355	1194
Cataract	109	363	453
Ante Natal Care (ANC)	1610	1664	2059
X-RAY	2610	2781	3528
Electrocardiography (ECG)	782	1125	1125
Ultrasonography (USG)	4812	2684	2837
Laboratory Services	9363	11899	13000
Dots on treatment	14	15	27
Blood transfusion	226	253	185





### A BOLD BINDU\* FIGHTS HIV

Being identified with HIV in 2001 did not shatter Bindu and Prakash's hopes of leading a happy family life. But, their happiness was short lived, when Prakash passed away leaving the responsibility of the household and three young children on Bindu. Having no support from relatives she struggled to fulfill the needs of the family. She gave into depression, which deteriorated her health condition and added to the woes of the family.

During one of his visits in the community, our community outreach worker identified Bindu's condition and instantly admitted her in the Community Care Centre for HIV/AIDS patients. The Outreach team ensured that Bindu and her children received appropriate medical & financial support, and connected her to a local NGO to provide her a job. Our constant follow ups brought to light that Rs 450 which she received was not enough for the household needs. Thus, we convinced the NGO about her status and helped Bindu to get another livelihood. Bindu now is a proud owner of a healthy goat which helps to support her financial needs. We see a new Bindu, confident, health and empowered who looks forward to a bright future for her family.

\* Name changed to protect privacy

## HIV/AIDS CARE & SUPPORT PROGRAMME

### PROGRAMME OVERVIEW

When an individual is diagnosed with HIV, it's not just deterioration in his/her physical health to deal with. Along with the physical illness are mental health conditions that may come up, such as depression and anxiety. However, with the right treatment and care, many people living with HIV can expect to live just as long as their HIV-negative peers. To extend quality health services to the people living with HIV/AIDS (PLHIVs), we initiated the following

**1) Anti- Retroviral Therapy (ART)** centre in SPARSH plays a critical role in controlling the virus so that PLHIV can live a longer, healthier life and reduce the risk of transmitting HIV to others. It provides essential drugs to patients which otherwise are unaffordable for them.

**2) Community Care Centre (CCC)** is a 5 bedded reserved area at SPARSH Rural Hospital. Since PLHIV have a weak immune system, these 5 beds exclusively for HIV positive patients help to protect them from other infections in the hospital and improve their prognosis.

**3) Vihaan Care & Support Centre (CSC)** is our outreach programme for PLHIV. It has been institutionalized in Osmanabad district to manage the care and support functions for HIV+ patients in other under-served remote villages. The objective of CSC is to provide information, access and linkage to PLHIV's for treatment and support. The CSC also provides a safe space for all PLHIVs including women, children, female and male sex workers, transgenders and hijras. The Rajasva abhiyan is an advocacy program organized by CSC organized with the help of Collector's office and District AIDS Prevention Control Unit (DAPCU). The past year three advocacy meetings were taken at CSC & the Collector's office in Osmanabad. The officers from various

### CSC Linkages

- Social Welfare Schemes
- ICTC (Integrated Counseling & Testing Center)
- Panchayat
- DLN (District Level Network)
- ICPS (Integrated Child Protection Scheme)
- ART/LAC PLUS (Anti Retroviral Therapy/ Link ART Center)
- District health facility
- RNTCP (Revised National Tuberculosis Control Program)
- TI (Targeted intervention)
- ICDS (Integrated Child Development Services)

government departments were present for the meeting. The Rajasva abhiyan created awareness regarding the schemes related to PLHIVs and helped the eligible individuals to register and avail benefits from the schemes. This year we expanded the care and support program to reach out to 11000 additional PLHIV in the two other districts viz Nanded and Beed.

In the recent years we also identified many orphaned children affected by HIV who live with aged grandparents, some of them cannot even afford a full day's meal for the children. In the absence of proper care, these children become increasingly vulnerable and many even succumb to death. Through our intervention, we ensure that they adhere to ART treatment and receive appropriate nutrition; we also encourage the counseling of caregivers to enable speedy recovery.





## OUTREACH ACTIVITIES

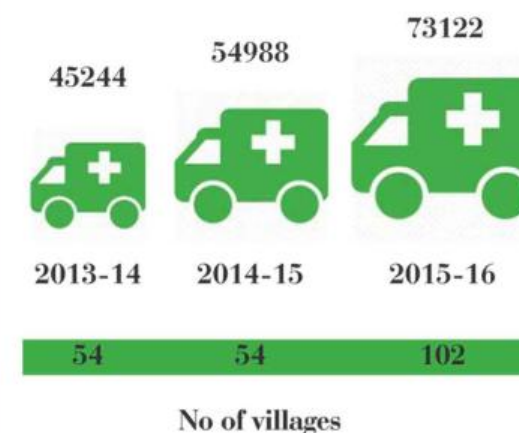
### PROGRAMME OVERVIEW

Initiated with the objective to provide healthcare to people in remote villages, our Mobile Medical Unit (MMU) continues to provide preventive, curative and diagnostic health services. The MMU run in collaboration with the Health Department of Government of Maharashtra is one of the only Public Private Partnership (PPP) healthcare providers which have won several accolades for its exemplary service. After the success of our 1st MMU in 2011, we expanded our reach this year with two MMUs expanding outreach program to additional 48 villages in Latur and Osmanabad district.

The Outreach Program focuses on improving the health status and wellbeing of the rural poor. It aims to improve the health indicators of the villages through not only clinical support at their door step but also preventive healthcare. The programme also focuses on building the capacities of the government grassroot functionaries/ village animators and the communities to create more awareness on health and increase the demand for quality health services. The facilities available on the MMU are general OPD checkup, ANC checkup, laboratory investigations, immunization, and delivery for pregnant mother and formation of health clubs in the villages.

**73,122** individuals from 102 villages directly benefited from the services of the MMU, within the radius of 170 kilometers of Osmanabad district & Latur district.

### MOBILE MEDICAL UNIT REACH



Sr No.	Activity	2013-14	2014-15	2015-16
1	Out Patient Department(OPD)	45244	54988	73122
2	Ante Natal Care(ANC) Checkup	3199	4158	5364
3	Pre/Post Natal Care (PNC) Checkup	673	662	1026
4	Lab Investigation	24363	34884	73124
5	Family planning counseling sessions	1827	2470	2116
6	Delivery (Normal)	11	6	4
7	Awareness campaigns	214	185	156





Relief and Rehabilitation

6



## PROGRAMME OVERVIEW

Millions of people are affected by natural disasters every year and their consequences are catastrophic and emotionally shattering. PRIDE being a people's organization has always responded to the need on the ground. We make an attempt to address the full cycle of disaster management through our initiatives. Thus, before a disaster occurs we train the communities to be better prepared for the disaster and help lessen the impact. Following a disaster we provide immediate aid to the people to help cope better.

When a disaster strikes individuals and communities lose everything that they have earned for so many years. This results in anxiety, shock or in worst cases even depression. This is where PRIDE steps in. We provide relief aid such as food, clothes, clean drinking water, etc to the affected victims to help them cope better with the stress. We also organise rehabilitation work such as building homes depending on the need of the hour.

The aim of disaster management training is to build the capacity of the communities, and that of staff of PRIDE India, to improve preparedness and response at all levels before, during and after disasters and to give all individuals of the community the means to work together in a coordinated manner.

This year we organized 2 trainings on disaster management for 75 representatives of 12 villages who successively trained more than 250 villagers.

Additionally, advocacy meetings were held with the government officials from the revenue department to prepare for the drought situation in Marathwada region. We were successful in providing additional tankers in the villages in the vicinity of SPARSH hospital, which were severely affected with drought. Further, we also conducted campaigns in the villages to create awareness regarding safe drinking water.

Disaster	Location	Year	Intervention
Earthquake	Bhuj (Gujarat)	2001	Temporary Shelters
Floods	Mahad (Maharashtra)	2005	Medical support, temporary shelters, food supplies
	Jammu & Kashmir	2014	Distributed lanterns to 197 households
Landslides	Mahad (Maharashtra)	2005	Supplied food, house building/ rebuilding, livelihood, counseling for post traumatic stress
Drought	Sastur(Maharashtra)	2012-2015	Supplied clean water through tankers every year

## Special Events and Initiatives

### YOUTH RESOURCE CENTRE

The youth of a community have the power to change the way their society is led. We realise the huge potential that our young adults hold which if nurtured can make enormous positive impact. Taking one more step toward furthering our objective, we initiated the Youth Resource Centre(YRC). This year we established 4 YRC's which provide a platform to the youths to gather and discuss topics of social importance. Apart from sharing the knowledge the youths are also encouraged to contribute towards the village development plan, hold rallies on socially important days, organise competitions to encourage participation and leadership. The YRC consists of sports equipments, musical instruments, library and books for career guidance. They meet every month to discuss their plan of action. The most significant activity this year by the youths, was conducting street plays on 'importance of higher education for girls' in 40 villages which reached out to more than 1600 villagers.



### CHILD AND FAMILY SPONSORSHIPS

Having worked with our communities for more than 30 years, we truly understand the hardships that our children face. The most challenging of them is the lack of quality socio-economic resources. Initiated with the objective to free children of financial hurdle to growth, our child and family sponsorship programme aims at providing support to the most critical components for survival. The 150 children who benefitted from this programme this year received educational support through study centre, improvements in health & sanitation amenities at home and one family member from their home is given livelihood support. The programme aims to create change in the immediate surroundings of the child over a span of many years. Some other activities funded from this programme for overall development includes personality development camps, exposure visits, sports and cultural activities.



### ARAAISH DUBAI

Our Annual fundraising event Araaish now in its 9th year was a huge success this season. Araaish – a roman word which means a brilliant display, stood true to its meaning with an extravagant show of fashion and glamor with celebrities. Started with the objective to raise funds for our sister concern Save the Children in 2007, this event is a chance to give back to the society. After a humble beginning in Mumbai, Araaish now has spread to more than five cities in India and launched its show in Dubai in 2011. The Dubai show exclusively raises funds for PRIDE India, where a percentage of the sales from the event benefit our communities in rural Maharashtra.





## STANDARD CHARTERED MUMBAI MARATHON(SCMM)

Yet again this year we participated in the SCMM, the largest marathon and fundraising event in Asia. Every year the Marathon presents a wonderful platform to raise awareness and visibility about our work. This year too, our moto was to raise awareness for our early childhood education programme(ECE). The funds raised helped us to provide the most crucial support to our rural communities and our children. Our enthusiastic corporate partner Aditya Birla Group echoed our theme for the year through the exuberant display of posters , banners and shouting slogans to spread the message.



## ANNUAL DAY 2016

On 5th February 2016, our Annual day was celebrated along with Save the Children India. The event constituted to encourage participation and involvement among our beneficiaries, achieved its objective beautifully at the Nehru Centre this year. Our staff and beneficiaries from Mahad and Sastur performed various cultural activities. The excitement, enthusiasm and unity among our children was gracefully displayed through coordinated group dances. We look forward to this event every year!



## THE ANNUAL WINTER SPORTS MEET

The Annual Winter Sports Meet was held among 22 participating villages in Shirgaon, Mahad block on 30th and 31st January. Over 300 youth participated in team sports such as tug of war, kabaddi, kho kho and individual sports like running, long jump, shot put and throw ball. The event witnessed immense talent and competition and concluded with distribution of prizes and trophies to all winners! Through these events we encourage the youth to take up active roles in building themselves and their communities.



## THE YEAR AT A GLANCE

**536** anganwadi workers/ village level volunteers from 268 villages trained in ECCD



**363** children between birth to 24 months were immunized timely



**396** children benefitted through our after school support programme at the study centres



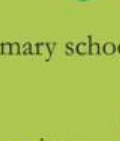
**1061** children participated in the activities of 30 child clubs instituted in 24 villages



**65** tribal children were a part of the Muktaashala programmes



**3323** children benefitted from the 53 libraries initiated in primary school



**2900** women are listed members of the Vipula co-operative society



**230** SHG's are registered with nationalised banks



**26** youths were linked to the Industrial Training Institute (ITI) for skill development training.



**15** villages, till date have been awarded by the central government for their exemplary work in the Ideal Village programme



**102** toilets were constructed in individual households and schools



**77761** villagers benefitted from SPARSH hospital services



**1286** safe deliveries were conducted, of which 58% were high risk deliveries



**102** orphaned HIV+ children were given care , support and treatment



**11,953** PLHIVs from 3 districts of Osmanabad, Nanded and Beed availed the services of CSC program



**73,122** individuals from 102 villages directly benefited from the services of the MMU





# THE YEAR AT A GLANCE



Health Minister visits SPARSH for republic day ,  
26 Jan' 2016



Youths from  
Adiste village proudly display their trophy



An enthusiastic group of young kids raise awareness  
on higher education for girls through rally



Our youths engrossed in a game of Kabaddi at the  
Inter Village Sports Meet



Health Awareness sessions held at community  
centre By Mobile Medical Unit staff



Addressing a gathering of People Living With HIV  
and parents of Children Living with HIV



HIVAIDS Awareness programme



Our enthusiastic team perform a street play on  
awareness on girl child education



Skill Development Programme being inaugurated at  
a CSC in Nanded on Women's Day



The beautifully painted walls of the  
Muthavali ideal school








Mr Seth from Akzonobel India Ltd addressing the  
gathering at the inauguration of Kol study centre



Our Managing Trustee with the kids at the  
Child Fund Book-My Friend programme



# Partners in Change

Programme Supported	Partners
 Child Centric Holistic Dev	Akzo Nobel India Limited, Child Fund International, USA DRT- Anthea Aroma Chemicals Pvt. Ltd Society to Heal Aid Restore Educate- SHARE Thomas Cook (India) Ltd The Aditya Birla Group
 Livelihood	Child Fund International, USA DRT- Anthea Aroma Chemicals Pvt. Ltd TATA Social Welfare Trust
 Health	Government of Maharashtra (Health Department) , National Health Mission Network of Maharashtra People Living with HIV/ AIDS Organization Functioning For Eytham's Respect- OFFER SPYN Welfare Foundation Save the Children India Child Fund International, USA
 Ideal village	System Plus Solutions (UK) Limited
 Women Empowerment	Child Fund International, USA
 Relief and Rehabilitation	AmeriCares
General & Others	Partners of Araaish Save the Children India

# Financial statements

## REPORT OF AN AUDITOR RELATING TO ACCOUNTS AUDITED UNDER SUB-SECTION (2) OF SECTION 33 & 34 AND RULE 19 OF THE BOMBAY PUBLIC TRUSTS ACT

Registration No.	:	F - 7662 (BOM)
Name of the Public Trust	:	THE P.R.I.D.E. INDIA
For the period ending	:	31 <sup>ST</sup> MARCH, 2016
1)	Whether accounts are maintained regularly and in accordance with the provision of the Act and the rules;	YES
2)	Whether receipts and disbursements are properly and correctly shown in the accounts;	YES
3)	Whether the cash balance and vouchers in the custody of the manager or trustee on the date of audit were in agreement with the accounts;	YES
4)	Whether all books, deeds, accounts vouchers or other documents or records required by the auditor were produced before him;	YES
5)	Whether a register of movable and immovable properties is properly maintained, the therein are communicated from time to time to the regional office, and the defects and inaccurate mentioned in the previous audit report have been duly complied with;	NO
6)	Whether the manager or trustee or any other person required by the auditor to appear before him and did so and furnished the necessary information required by him;	YES
7)	Whether any property of funds of the Trust were applied for any object or purpose other than the object or purpose of the Trust;	NO
8)	The amounts of outstanding for more than one year and the amounts written off, if any;	NIL
9)	Whether tenders were invited for repairs or construction involving expenditure exceeding ₹ 5,000/-;	N. A.
10)	Whether any money of the public trust has been invested contrary to the provisions of Section 35;	NO
11)	Alienation, if any, of the immovable property contrary to the provisions of Section 36 which have come to the notice of the auditor;	NO
12)	All cases of irregular, illegal or improper expenditure or failure or omission to recover monies or other property belonging to the public trust or of loss or waste of money or other property thereof, and whether such expenditure, failure, omission, or loss or waste was caused in consequence of breach of trust or misapplication or any other misconduct on the part of the trustees or any other person while in the management of the trust;	NO
13)	Whether the budget has been filed in the form provided by rule 16A;	YES
14)	Whether the maximum and minimum number of the trustees is maintained;	YES
15)	Whether the meetings are held regularly as provided in such instrument;	YES
16)	Whether the minute books of the proceedings of the meeting is maintained;	YES
17)	Whether any of the trustees has any interest in the investments of the trust;	NO
18)	Whether any of the trustee is a debtor or creditor of the trust;	NO
19)	Whether the irregularities pointed out by the auditors in the accounts of the previous year have been duly complied with by the trustees during the period of audit;	N. A.
20)	Any special matter which the auditor may think fit or necessary to bring to the notice the Deputy or Assistant Charity Commissioner.	Annexure - P & Audit Report



For **L. K. MANJREKAR & CO.**  
 Chartered Accountants  
 ICAI Firm Registration No. 106006W



**(L. K. MANJREKAR)**  
 PROPRIETOR  
 (M. No. 30737)  
 Mumbai, 30<sup>th</sup> September, 2016.



THE BOMBAY PUBLIC TRUSTS ACT, 1950  
SCHEDULE IX [Vide Rule 17 (1)]

Name of the Public Trust: THE P.R.I.D.E. INDIA  
Income and Expenditure Account for the year ended 31<sup>st</sup> March, 2016

Registration No. F - 7662 (BOM)

EXPENDITURE	ANNEXURE	AMOUNT	INCOME	ANNEXURE	AMOUNT
To Expenditure in Respect of Properties Repairs & Maintenance Rates, Taxes, Cess Depreciation on Buildings	F	37,050 32,919 1,362,955	By Interest Accrued Realised	J	315,328 424,109 739,437
To Establishment Expenses	N	8,580,299	By Donation in Cash or Kind	K	16,969,217
To Audit Fees		206,100	By Grants Transfer from Earmarked Fund Others	C L	27,655,807 5,705,390
To Expenditure on objects of the trust Educational Medical Relief	O	18,249,180 22,212,866	By Income From Other Sources	M	3,202,717
To Depreciation on other Assets	F	1,898,569	By Sundry Balances Written Back		14,150
To Surplus carried over to Balance Sheet		1,706,780			
<b>TOTAL</b>		<b>54,286,718</b>	<b>TOTAL</b>		<b>54,286,718</b>

Significant Accounting Policies - Annexure P

For and on behalf of the Board of Trustees  
THE P.R.I.D.E. INDIA

(RAHUL I. KADRI)  
TRUSTEE

(ISHA MEHRA)  
TRUSTEE



In terms of our report attached of the even date  
For L. K. MANJREKAR & CO.  
Chartered Accountants  
ICAI Firm Registration No. 106006W

(L. K. MANJREKAR)  
PROPRIETOR  
(M. No. 30737)  
Mumbai, 30<sup>th</sup> September, 2016



Mumbai, 30<sup>th</sup> September, 2016

THE BOMBAY PUBLIC TRUSTS ACT, 1950  
SCHEDULE VIII [Vide Rule 17 (1)]

Name of the Public Trust: THE P.R.I.D.E. INDIA  
Balance Sheet as at 31<sup>st</sup> March, 2016

Registration No. F - 7662 (BOM)

FUNDS & LIABILITIES	ANNEXURE	AMOUNT	PROPERTY & ASSETS	ANNEXURE	AMOUNT
<b>Trust Funds or Corpus</b>			<b>Immovable Properties</b>	F	
Corpus	A	4,077,500	Balance as per last Balance Sheet		19,797,841
		<b>4,077,500</b>	Add: Additions during the year		14,788,386
			Less: Depreciation for the year		1,362,955
					<b>33,223,272</b>
Other Earmarked Funds: Building Fund Specific Earmarked Funds	B C	42,181,155 14,667,343	<b>Furniture, Fixtures and Others</b>	F	
		<b>56,848,498</b>	Balance as per last Balance Sheet		4,440,731
			Add: Additions during the year		7,815,225
<b>Liabilities for</b>			Less: Deductions during the year		700
Expenses	D	173,729	Depreciation for the year		1,898,569
Others	E	1,025			<b>10,356,687</b>
		<b>174,754</b>	<b>Advances</b>	G	
<b>Income and Expenditure Account</b>			Employees		1,133
Balance as per last Balance Sheet		10,997,418	Others		592,337
Add: Surplus as per Income and Expenditure Account		1,706,780			<b>593,470</b>
		<b>12,704,198</b>	<b>Income Outstanding</b>	H	
			Other Income		11,714,889
			Interest		345,584
					<b>12,060,473</b>
			<b>Cash and Bank Balances</b>	I	
			Balance with Banks		9,968,901
			Fixed Deposits		7,578,421
			Cash on Hand with the project		23,726
					<b>17,571,048</b>
<b>TOTAL</b>		<b>73,804,950</b>	<b>TOTAL</b>		<b>73,804,950</b>

Significant Accounting Policies - Annexure P

The above Balance Sheet to the best of my belief contains a true account of the Funds and Liabilities and of the Property and Assets of the Trust.

For and on behalf of the Board of Trustees  
THE P.R.I.D.E. INDIA

(RAHUL I. KADRI)  
TRUSTEE

(ISHA MEHRA)  
TRUSTEE



Mumbai, 30<sup>th</sup> September, 2016

In terms of our report attached of the even date  
For L. K. MANJREKAR & CO.  
Chartered Accountants  
ICAI Firm Registration No. 106006W

(L. K. MANJREKAR)  
PROPRIETOR  
(M. No. 30737)  
Mumbai, 30<sup>th</sup> September, 2016





# STAKEHOLDERS SPEAK

'PRIDE India has been a valuable partner to AkzoNobel in implementing our CSR project in Maharashtra. Its strong presence in the ground and strategic thinking has helped us in making our projects sustainable and participatory/. We wish all the best to PRIDE and would be looking forward to work with them in times ahead!

**Parthasarathi Changdar**  
CSR Manager, AkzoNobel India Ltd.

The ECCD training provided vital information about child development. This training will not only help me in my profession but in my personal life too. The sessions were well planned and delivered effectively; we were also trained on how to convey this information to Swaraksha Mitra's and caregiver in the community. The encouraging and creative environment helped us to learn better.

**Aparna**  
Mentor, Swades Foundation

I suffered a lot due to continuous cough and was really sick of having antibiotics. The nearest primary health centre is about 12 kms from my village and the Rural hospital in Omerga is 24 kms. I had visited both the places and many other private doctors but none of them could cure my problem. None of the doctors around my village prescribed sputum test and X ray which at the first visit the doctors in SPARSH advised. SPARSH doctor not only counseled me but also helped me in taking regular medication for TB. SPARSH saved my life.

**Gani Chand Pinjari**  
Beneficiary, Osmanabad.

"I'm so grateful that Pride India is implementing the Ideal Village programme in our village. The programme has made large scale improvements in all spheres. For example, they helped us realize the importance of cleanliness and encouraged us to clean the village periodically all the villagers come to collect, receive information about how to keep village hygienic. We are also using newly constructed

individual toilets. We also received educational and play material for our school and Anganwadi. A new gymnasium was constructed for the youths equipped with variety of sport material. The programme also encouraged youths to get involved in village development and other village level programmes. Ideal Village programme has changed perspective towards our village. Thank you for directing our energies and for bringing this positive perspective in us"

**Sayaji Ramachandra Jadhav, Ex.**  
Sarpanch, Panderi village.

The PRIDE Sastur Hospital is an ideal model of Public Private Partnership working in collaboration with the Government of Maharashtra since 1997. All the national programmes are implemented as per government guidelines by the PRIDE team. I witnessed cleanliness, patient friendly environment, digital X ray and other high-quality services at the SASTUR hospital. The delivery of services is punctual and prompt. Developing an MIS for managing data is an innovative idea. I congratulate the team for their tremendous efforts.

**Dr. Sadhana Jagade, Additional Director,**  
Directorate of Health Services, Mumbai

# DONATION PAGE

Donate to make a positive impact on rural communities in India

## Child and family sponsorship programme

Particulars	Per Month (Rs)	Per Year
Help a child access quality education	550	6600
Sponsor healthcare services for a child	500	6000
Provide livelihood to a member of the family	500	6000
TOTAL	1550	18600

## Support HIV+ Child

Particulars	Per Month (Rs)	Per Year
Help a child access quality education	600	7200
Sponsor healthcare services for a child	700	8400
TOTAL	1300	15600

Name Mrs/Mr/Ms\_\_\_\_\_

Address\_\_\_\_\_

Telephone\_\_\_\_\_ Date\_\_\_\_\_

Email\_\_\_\_\_

PAN\_\_\_\_\_

Purpose of donation

I wish to donate in favour of 'PRIDE INDIA'

Rupees\_\_\_\_\_ In words\_\_\_\_\_

Enclosed my cheque/DD No:

Bank\_\_\_\_\_ Date\_\_\_\_\_

Made in favour of 'PR.I.D.E INDIA'

*All donations are 50% exemptible under section 80G of the Income Tax Act 1961  
To make a donation online log on to [www.prideindia.org](http://www.prideindia.org)*







**Head Office:**

Plot No. S F 9, G Block  
Next to American School of  
Bombay,  
Bandra Kurla Complex,  
Bandra East, Mumbai 400098  
**Tel:** +91 22 2652 0601/02; Fax:  
+91 22 2652 0604  
**Email:** [contact@prideindia.org](mailto:contact@prideindia.org)  
**Website:** [www.prideindia.org](http://www.prideindia.org)

**Project Offices:**

Centre for Rural Development,  
P.R.I.D.E. India  
Near Government Rural  
Hospital  
Nave Nagar, Taluka Mahad,  
District Raigad,  
Maharashtra 402301  
**Tel:** +91 02145 222492  
**Email:** [program.mahad@prideindia.org](mailto:program.mahad@prideindia.org)

SPARSH Rural Hospital  
Sastur, Omerga National  
Highway No. 9,  
Taluka Lohara, Dist-  
Osmanabad,  
Maharashtra: 413606, India  
**Tel:** 91 02145 222492  
**Email:** [program.mahad@prideindia.org](mailto:program.mahad@prideindia.org)

