

30

years

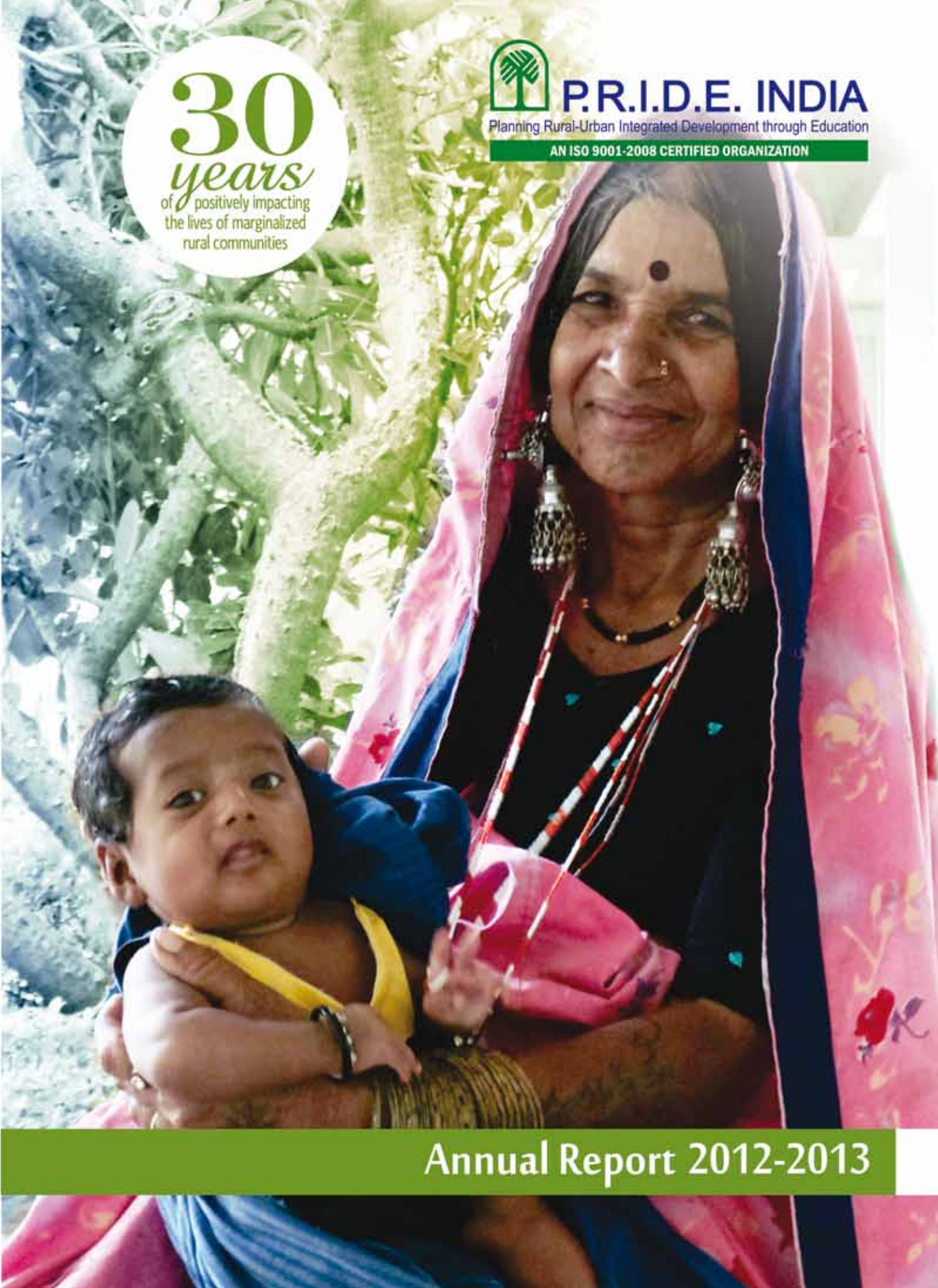
of positively impacting
the lives of marginalized
rural communities



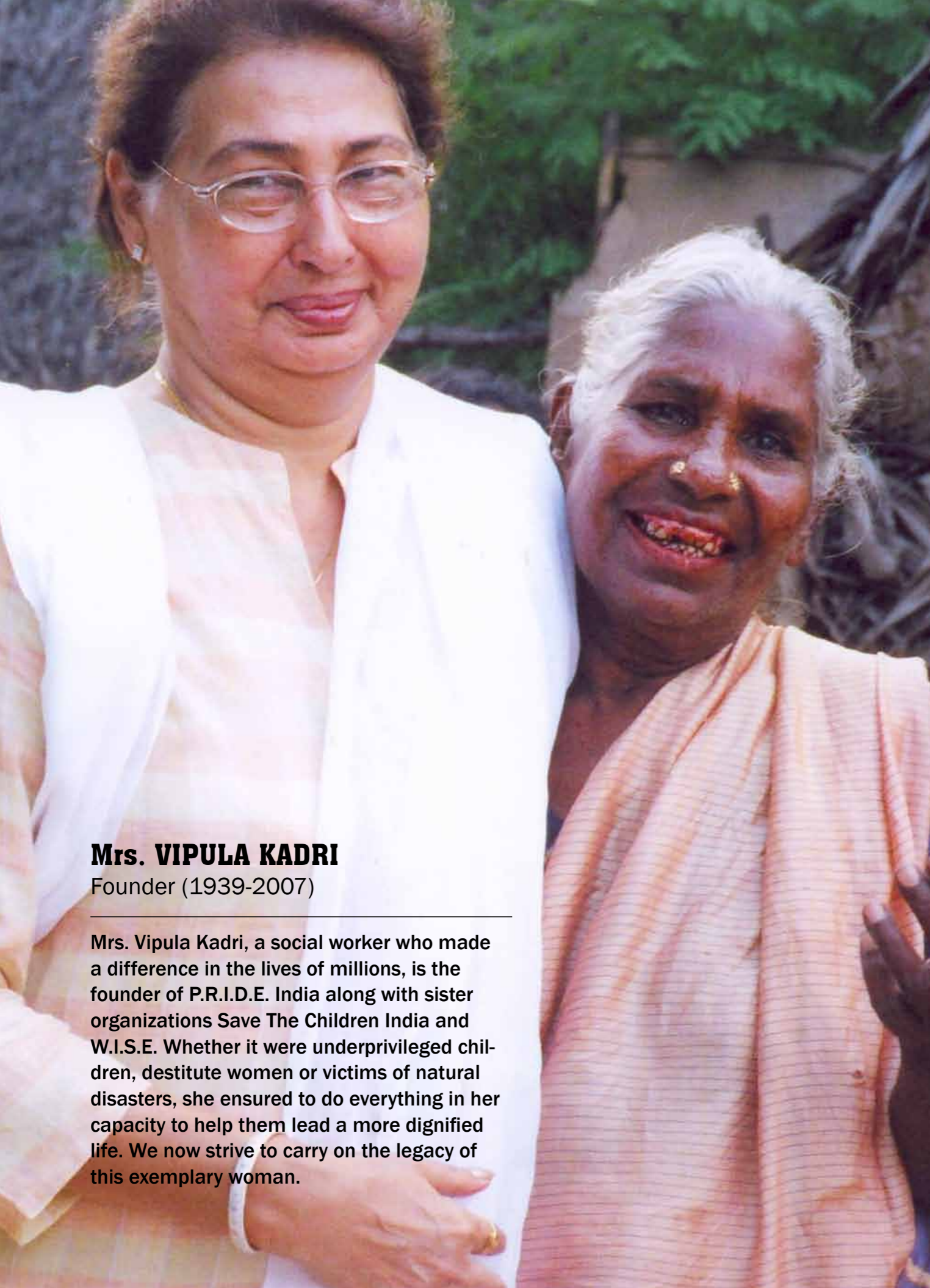
P.R.I.D.E. INDIA

Planning Rural-Urban Integrated Development through Education

AN ISO 9001-2008 CERTIFIED ORGANIZATION



Annual Report 2012-2013



Mrs. VIPULA KADRI

Founder (1939-2007)

Mrs. Vipula Kadri, a social worker who made a difference in the lives of millions, is the founder of P.R.I.D.E. India along with sister organizations Save The Children India and W.I.S.E. Whether it were underprivileged children, destitute women or victims of natural disasters, she ensured to do everything in her capacity to help them lead a more dignified life. We now strive to carry on the legacy of this exemplary woman.

Content

Board of Trustees	1
Message from the Trustee / Chief Functionary	2
Our Vision & Mission	4
Our Areas of Work	5
An Overview	6
Child Centric Holistic Development Program	8
The Early Child Care & Development (ECCD)	10
Education	12
Child Protection and Participation	14
Women Empowerment	16
Livelihood	18
Child Sponsorship Program	20
Sastur Project of Action Research Services through Hospital (SPARSH)	22
In Patient and Out Patient Services	24
Reproductive and Child Health Services	26
Community Care Centre	28
Outreach Activities	30
Other Initiatives	32
Moments of Pride	34
Supporters Speak	35
Beneficiaries Speak	36
The Year In Pictures	37
Partners in Change	42
Financial Statement 2012-13	43

Board of Trustees

Mr. I. M. Kadri

Chief Patron

Ms. Isha Y. Mehra

VIVRE Design Studio

Mr. Rahul Kadri

Director - Kadri Consultants Pvt Ltd., Partner - I. M. Kadri Architects

Ms. Monisha Shetty

Creative Director - R House, Director - S2 Realty and Developers Pvt Ltd.

Mr. Nikunj Jhaveri

Chairman & Founder, Systems Plus Group of Companies

Ms. Nirja Mattoo

Chairperson, Centre for DOCC, S.P. Jain Institute of Management and Research

Mr. Ajay Srinivasan

CEO, Financial Services, Aditya Birla Group

Mr. Madhavan Menon

Managing Director, Thomas Cook (India) Ltd.

Ms. Rekha Rajagopal

Advocate, High Court

Mr. Yogesh Mehra

Fund Manager, Yogesh Mehra Associate

Dr. Gajanan D. Velhal

Professor - Additional, Dept of PSM,
T N Medical College & B Y L Nair Charitable Hospital

Mr. Ram Tarneja

Chairman, Jollyboard Ltd.

Message from the Trustee / Chief Functionary

Dear Friends,

We are proud to announce that P.R.I.D.E. India's presence has been for over 30 years now and each year, P.R.I.D.E India has been advancing in its mission of facilitating the process of empowering the marginalised rural communities to lead a life with dignity and self respect'.

We have immense pleasure to bring the Annual Report of P.R.I.D.E. India for the year 2012-13 to you all. For P.R.I.D.E. India, this year was enmarked with significant developments in terms of expansion of its health, education and livelihood programs.

I am happy to inform you that year after year we are seeing encouraging response from the Government of Maharashtra in support to our health initiative. We are reaching more and more women and children now through our hospital, dispensary and the outreach workers. With the revision of the agreement this year, government's stake in partnership and funding support has also increased. This year we could equip our hospital with all the essential equipments with support from National Rural Health Mission. Also, we have added 10 more beds to the hospital for post natal care with support from Government of Maharashtra. SPARSH was also awarded Ahilyabai Holkar Puraskar this year by the Government of Maharashtra for 'Best Mother and Child Health Services' for the year 2011-12.

While we are phasing out from the Community Care Centre which addressed the health needs of people living with HIV/AIDS through centre based care, we are partnering with HIV Alliance for strengthening our outreach program on prevention of HIV/ AIDS among High risk groups.

This year we also entered into partnership with Consulate General of Japan for strengthening our livelihood and Early Child Care and Development programs. With its support, we would be constructing training cum resource centre in Mahad which will enable us to further strengthen our work in the above thematic areas With support from Sir Dorabjee Tata Trust, we are also initiating a Bamboo based livelihood program for enhancing source of income for the women farmers through which 400 women will benefit from sustainable livelihood opportunity.

Next year, we plan to consolidate our experience, learnings and good practices in education and Early Child Care and Development and build grounds for scaling it up to other geographical locations.

This Annual Report is just a small coverage of the enormous work done in the year, but definitely there is a long way to go.....

All these progress would not have been possible without the great enthusiasm and support extended by all of you. I would like to thank all our partners and supporters for being with us and supporting us in making a difference in lives of many deprived children and their families. I sincerely seek your continued cooperation in advocating and disseminating the successful initiatives to make larger impact in near future.

We look forward for your valuable feedback and suggestions!

MRS. ISHA .Y. MEHRA

Trustee & Chief Functionary
P.R.I.D.E. INDIA



Our Vision

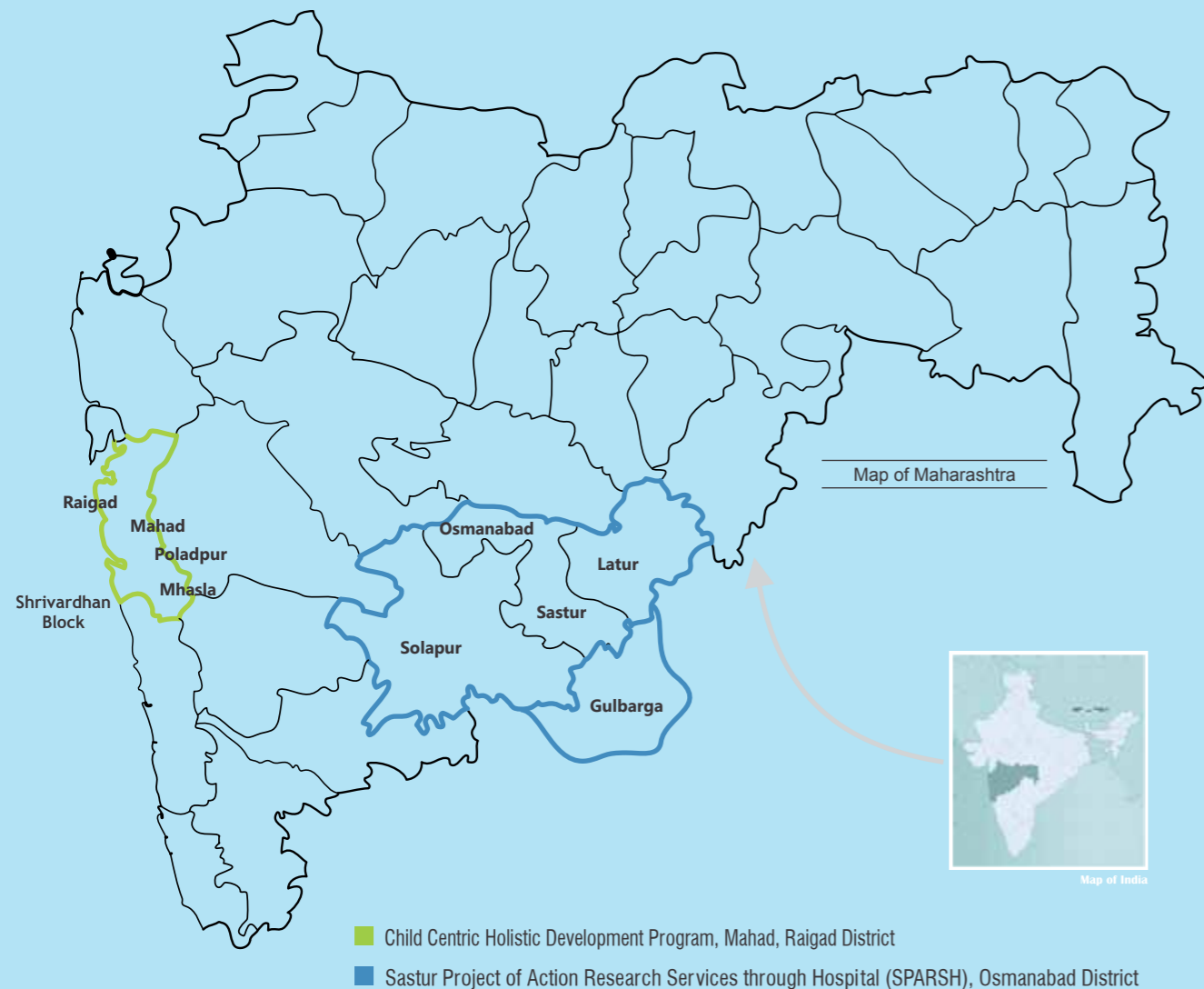
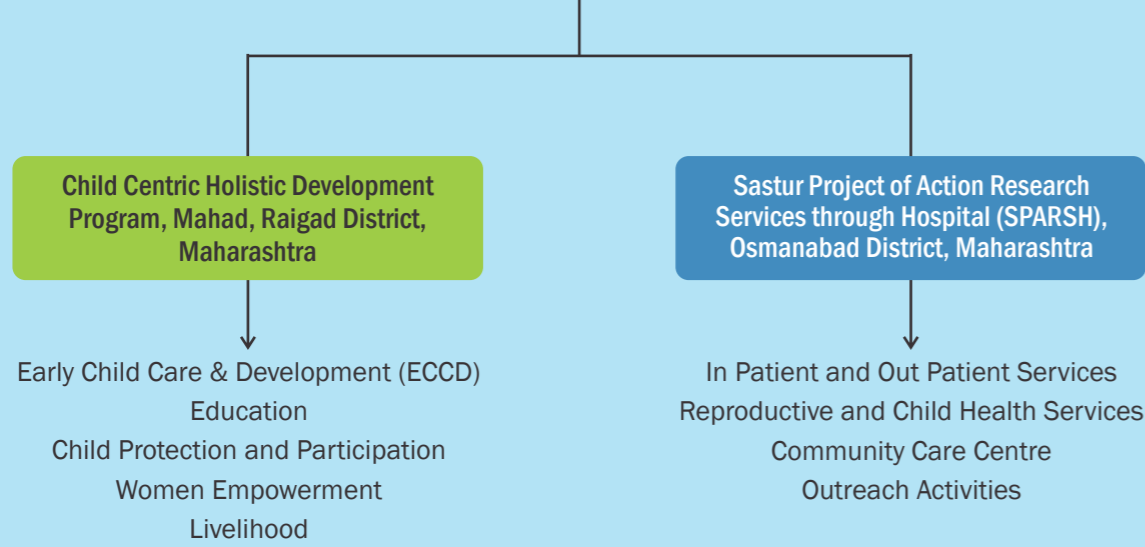
P.R.I.D.E. India envisions a society based on equal opportunities and human rights.

Our Mission

To facilitate the process of empowering the marginalized communities, to lead a life with dignity and self-respect.

Our Areas of Work

P.R.I.D.E. India



An Overview

P.R.I.D.E. India (Planning Rural-Urban Integrated Development through Education) is a Non-Governmental Organization, registered under the Societies Registration Act 1860 in the year 1982. The vision of the pioneer late Smt. Vipula Kadri, was to promote holistic development of marginalized rural communities, considering the family as a unit, by adopting an integrated approach with the main emphasis on health, education and empowerment.

P.R.I.D.E. India has evolved over a long journey of 30 years, to its present high level position with an excellent reputation in the areas of its reach.

P.R.I.D.E India currently covers Raigad, Osmanabad, Latur and Solapur districts of Maharashtra state and Gulbarga and Bidar Districts of Karnataka through its two Flagship Programs.

1. Child Centric Holistic Development Program, Mahad, Raigad District
2. Sastur Project of Action Research Services through Hospital (SPARSH), Osmanabad





Child Centric Holistic Development Program

The Child Centric Holistic Development Program addresses the developmental needs of rural poor children and their families in Mahad. It actualizes this by building relationships with children, families and communities through sustainable initiatives in Early Child Care & Development (ECCD), Education, Child Protection, Livelihoods, Women empowerment, Health and Disaster Risk Reduction.

The program has reached out to over 25,000 children and their families annually across 44 villages in Mahad.



The Early Child Care & Development (ECCD)

The Early Child Care & Development (ECCD) program promotes healthy growth of children below 6 years of age by monitoring their growth on a Child Development Scale (CDS) and training their care givers in home based & centre based care.

This year, the program was instrumental in promoting healthy growth among 1,600 children, cumulatively impacting 25,810 children so far. 41 ECCD centres have been handed over by P.R.I.D.E India to the Department of Women and Child Development, Government of Maharashtra as part of mainstreaming the program. During the year 40 Integrated Child Development Scheme (ICDS) workers and 20 Accredited Social Health Activist and Auxiliary Nurses were capacitated on safe motherhood and child health. Apart from this, medical assistance was provided to 239 under-nourished children. Also 1458 children under 6 years of age were de-wormed with support from Primary Health Centre (PHC) and Integrated Child Development Scheme (ICDS). 185 caregivers and family members were provided awareness and education on HIV/AIDS. P.R.I.D.E. INDIA shared its experience on CDS at the Global Operations Leadership Meeting held at ChildFund India's National Office Bangalore.

- Carved a niche in Early Child Care and Development (ECCD) and has impacted 25,810 children till date.
- Collaboration with the Department of Women and Child Development, Government of Maharashtra – Trained its ICDS workers and mainstreamed 41 ECCD Centres.





Education

- The School Quality Improvement and Reading Improvement Program benefited students of 20 Study Centres, 19 Government schools and a Muktsala.
- 1,287 children accessed the after school reinforcement education program through 20 Study Centres to cope up with their school academic requirements. 10 government schools were equipped with science laboratory material which enabled the children to carry out various scientific practical experiments.
- 100% enrollment in primary schools in operational area.
- 550 children from Class 8 to Class 12 availed the benefit of special coaching classes, educational material and career guidance.



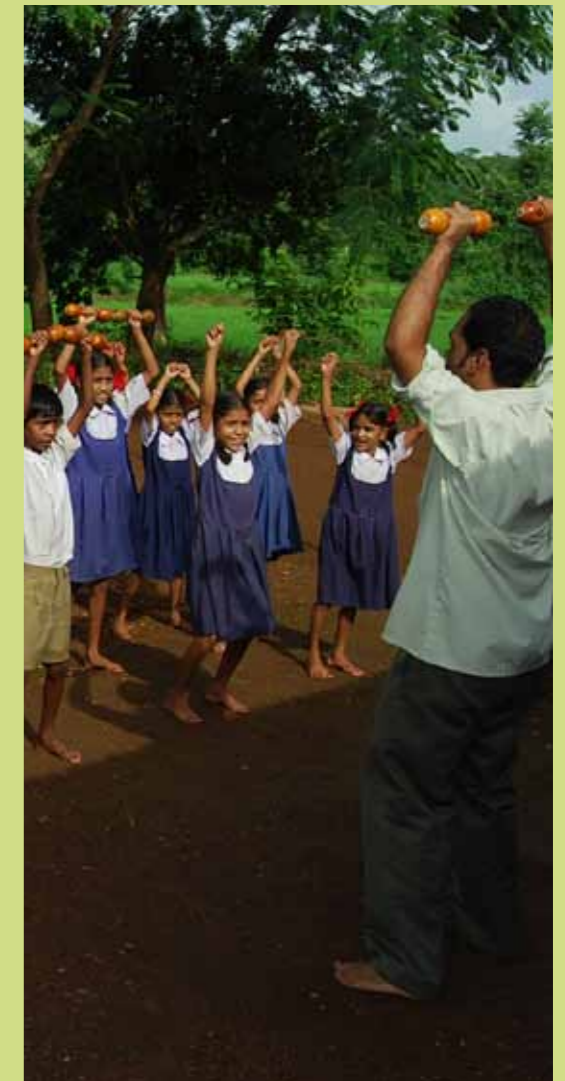
P.R.I.D.E. India is making a sustained effort to ensure quality education for children through several initiatives like Balwadi, Study centres, Reading Improvement program, Children Club etc. However, its scope is often hindered because children do not have access to a light at home for their studies. Thus the initiative of Project 'I-Illuminate' was born to ensure that every child has access to a personal study light and a Kerosene free environment. P.R.I.D.E. India is trying to ensure that every child's Right to Education is realized by providing the children of Mahad and Sastur access to a personalized, lightweight, non-polluting, dependable and safe solar energy study light.

1500 children benefited through Project 'I-Illuminate' this year, and we hope to eliminate the darkness that comes with a lack of education.



Child Protection and Participation

- P.R.I.D.E. India is now a part of CHILD-LINE India Network. As a Sub-Centre organization at Raigad, Maharashtra P.R.I.D.E. India executes Child Line projects under Integrated Child Protection Scheme, a project of the Ministry of Women and Child Development in partnership with State Government, NGOs and the Corporate Sector.
- Ensured Child Rights, Protection & Participation by empowering children and youth through 8 Child Resource Centres, 46 Children Clubs and 37 Child Well Being Committees.
- This year, capacity of 113 Children Club members was built, focusing on leadership skill enhancement and active functioning of the Children Clubs.
- 220 youth participated in the sanitation campaign during Sant Gadge Baba Swachata Abhiyan.
- 397 children and stakeholders including 176 parents, 70 Panchayat Raj Members, 190 Self Help Group (SHG) members and 30 Parent Teacher Association members were trained on child protection and legal provisions related to child rights.
- 100 children were given exposure for forming a Child Federation. Subsequently, a federation has been initiated from among 46 Children Clubs this year.





Women Empowerment

- Vipul Women Credit Cooperative Society, one of the major initiatives of P.R.I.D.E. India for empowerment of women in Mahad, completed its 24th years initiated on the principle of mutual help and support, the cooperative has provided rural poor especially the women access to financial services hitherto being not available.
- Currently, this cooperative has a total membership of 2697 women. This year a dividend of 9 percent was declared for the shareholders and also the maximum limit of loan amount increased from ₹ 30,000 to ₹ 50,000. To ensure that women get higher benefits from the cooperative, P.R.I.D.E. India is currently focusing more on its further strengthening and growth.





Livelihood

- 840 Women Self Help Groups (SHGs) were capacitated during the year to manage the thrift and credit activities of the group. All these groups are linked with the banks and avail support from the government for credit. To enhance the income, these women members run various micro enterprises. This year a Packaging unit with support from Thomas Cook was set up for 3 SHGs of Mahad who are involved in making spices, pickles and snacks. This will help in providing livelihood support to 40 young women.
- This year, P.R.I.D.E. India also initiated a Bamboo based livelihood project for enhancing source of income for the women farmers of 32 SHGs. This initiatives is intended to benefit 400 women and their families.
- A career guidance workshop was organised in which 350 youth from villages of Mahad participated. Resource persons from different sectors were invited to provide guidance on the various available career opportunities.



Sandhya's Story

Sandhya Santosh Zanje is a resident of Gondale. Her life had fallen apart after her husband lost his job in Mumbai. Circumstances had forced her and her 5 year old son to leave their residence at SionAntop Hill and move back to the village.

"When we came from Mumbai we had nothing in hand but a piece of land but the program supported us by giving seeds and manure for the field. They also sponsored my son and he was able to get good nutrition, educational material and even clothes. My involvement in Bachat Gat helped me personally by improving my self-confidence which I had lost, because of our poverty. I also got an opportunity to participate in sports and games which also helped me to mingle with the villagers. Later I was trained to prepare pickles through our SHG Group and we got profit from the sale of the same," she says.

Sandhya shudders to imagine what life would be without the intervention of the programs that have helped build her life. She is immensely grateful for having got her life back on track, and looks forward to a bright future in the small village, Gondale.



Child Sponsorship Program

Our child sponsorship program is more than just a monetary arrangement. We aim at establishing a personal connect between the sponsor and the child whose life is being consequently changed. We encourage a meaningful relationship between child and sponsor by sharing pictures, stories and updates on the child progress and also giving chance to sponsor to write to the sponsored child or visit the child and making an active partner in child's progress and development.



Sanjay's Story

Sanjay Mahadev Kondwilkar is a 40 year old School Teacher who lives in Mahad, Navenanagar.

Over the past 8 years, Sanjay has been witness to the radical change that is coming about in the sphere of education in his village; he notices that all the school children up to standard 7, which makes 80% of the students, are directly or indirectly benefitting by the P.R.I.D.E. India initiatives.

Besides maintaining and repairing the school ground, the various initiatives have provided black boards, and provided a library along with educational material from simple stationery to science laboratory equipment. Also, toilets have been built for girls and boys.

"Sponsorship of children is very important as the children get educational material and it becomes easy for children from lower socio-economic groups to continue with formal education," he says.

"P.R.I.D.E. India has left a deep impact on me as it works with great efforts for the improvement of the school as well as in the education level of the children. The entire team is like a role model for me and I would like to join hands with them in their great job of development of children", says a proud Sanjay who is more than happy to see more and more children attending school, learning and growing into responsible citizens.



Sastur Project of Action Research & Services through Hospital (SPARSH)

SPARSH was set up in 1993 by P.R.I.D.E. India in partnership with the Government of Maharashtra, when a devastating earthquake hit Sastur village in the Osmanabad district, taking 20,000 lives and injuring over 30,000.

SPARSH today is an integral part of Latur and Osmanabad districts with its 40 bedded Rural Hospital, Community Care Centre and Outreach program. The services at SPARSH are mainly availed by people in the Marathwada region especially from the border districts of Maharashtra and Karnataka i.e. Osmanabad, Latur, Solapur, Bidar and Gulbarga. This year alone SPARSH extended medical assistance to over 64300 patients from 140 villages. With the construction of a separate Post Natal Care ward, the hospital has an addition of 10 beds. The Hospital has witnessed an increasing trend in number of patients being treated for Reproductive Mother and Child Health Care. The institutional delivery in SPARSH has increased to more than 950 this year as against 700 last year.

HOSPITAL FACILITIES AND SERVICES

- Out Patient Care (OPD) with well-equipped examination, consultation and specialist clinic rooms
- Reception
- Waiting area
- Registration Counters
- Separate Male and Female wards
- Maternity ward and well equipped labour/ delivery room
- Paediatric wards and intensive neonatal care facility
- Diagnostic facilities like X-Ray and pathological laboratory test.
- Sputum microscopy centre (DOT centre)
- I.C.T.C. (Integrated counselling and Testing Centre)
- USG Unit
- Services facilities like dressing and injection room
- Well equipped operation theatre (OT)
- Pharmacy
- Pantry and kitchen
- Computerized medical records
- Ambulance Services
- Well equipped training centre
- Audio - visual aids
- Generator for essential services
- Residential Doctors quarters
- Nurse station
- Kitchen gardening
- Link ART Centre
- ANC & PNC Clinic)



In Patient and Out Patient Services

The hospital has been making strides in healthcare, with increase in inflow of patients year after year and the number of successful operations increasing every year!

PERFORMANCE HIGHLIGHTS AT A GLANCE

From April 2012 - March 2013

Sr. No.	Description	2012-13
1	OPD	64328
2	IPD	6224
3	NORMAL DELIVERY	765
4	LSCS (Cesarean Operations)	192
4	FAMILY PLANNING OPERATIONS	669
5	MINOR OPERATIONS	394
6	MAJOR OPERATIONS	714
7	CATARACT	93
8	ANC	1678
9	IMMUNISATION	On going
10	X-RAYS	3815
11	ECG	924
12	USG	2124
13	LAB TOTAL PATIENTS	12204 (56360 Tests)
14	DOTS ON TREATMENT (TB)	20





Reproductive and Child Health Services

2012-2013 marked the construction of a separate Post - Natal Care ward and Neonatal Intensive Care Unit at SPARSH hospital. This ward has been constructed to reduce incidences of infection among neo-nates and mothers by ensuring an isolated environment for them. This will be useful for awareness and education programs for mothers while in hospital and will reduce Infant Mortality Rate and Maternal Mortality Rate.

Considering the low sex ratio of 853 in the Osmanabad District, P.R.I.D.E. India has taken the initiative of welcoming the female child by presenting a Balantvida – a sari to mother and silver chain to the child. The hospital has witnessed positive results of this initiative as the same is celebrated with relatives of the family in the institution itself, making them aware of the importance of the girl child.



Laying the Foundation stone on the November 2nd, 2012 in the presence of Mr. Mandge Deputy Engineer, Public Works Department.





Community Care Centre

It is not unknown that People Living with HIV/AIDS (PLHA) are more often than not faced with social neglect and ostracism. To promote the concept of 'Home Based Care', a "Community Care Centre" was set up with the support from NACO (National Aids Control Organization). This 10 bedded Centre admits patients for 6 days where they are counseled to cope with HIV and regain their self-esteem and confidence.

The Antiretroviral Therapy (ART) is also extended to patients at the Centre. The Outreach Workers also maintain a regular follow up of these patients by visiting their houses to ensure the patient adhere to the ART. The Link ART Centre was also established last year with the help of Maharashtra State AIDS Control Society wherein 88 patients are getting benefited. P.R.I.D.E. India is making efforts to link the people living with HIV/AIDS with several government schemes so that they are able to sustain and take care of themselves. This year 18 such patients living with the disease benefitted under the Sanjay Gandhi Niradhar scheme, a social scheme of the government for HIV positive patients wherein the patients receive ₹ 600/- per month as a lifelong pension every month

The Community Care Centre at SPARSH was Graded 'A' in Maharashtra state as per the evaluation of NACO. Till date, a total of 2864 people living with HIV/AIDS have been registered at the centre, of which 1363 are female and 355 are children.





Outreach Activities

Family Planning Initiatives

In rural India, as tradition dictates, in permanent family planning operations it is always the woman in the family who has to undergo the tubectomy surgery. If a male undergoes the surgery, his manhood is perceived to diminish. In order to change this perception in the mind of the residents of the Osmanabad district, SPARSH rural hospital has started giving monetary incentive to the male in the family to undergo the vasectomy.

Providing Health Services at the door step - Mobile Medical Unit

In order to relieve the villagers from long hours of travel to the hospital, and to meet immediate health care needs of the communities in remote rural areas, SPARSH started its "Mobile Medical Unit". The Mobile Medical Unit, travels to 55 villages in the Osmanabad district receive medical assistance from this Unit. This year, 33,432 people benefitted from the health services provided by the Mobile Medical Units.

Deformity Correction Camp, and other Medical Camps

In order to address the health needs of children with musco-skeletal deformities that occur due to cerebral palsy, nutritional deficiencies or congenital birth defects, two such correction camps were organized at SPARSH hospital.

Around 350 children were screened during the camp and 136 surgical procedures were conducted, from which 78 children in age group of 0-14 years benefitted. These camps were held with support from Rotary club London, Rotary club Ambarnath, and the Saraswati Pratisthan, chembur by a team of 14 doctors led by Dr. John Clegh and Dr. MayureshWarke.

A special Multi diagnostic camp and health awareness camps were organized at the village Bhusni of Umarga block of Osmanabad, where 855 patients were screened and treated by a team of Orthopaedician, Gynaecologist, Physician and paediatrician.

During the year, Ayush medical camps were also organized by SPARSH wherein experts in alternative medicine like Ayurveda, Homeopathy, Naturopathy and Physiotherapy attended these camps. About 1323 patients from across 45 villages were provided medicines and necessary treatment at these camps. Various pathological laboratory tests were conducted after which there was a follow up of patients as well. Expert doctors from Solapur Medical College and Ayurvedic College, Solapur provided support in these camps.



Other Initiatives

For combating the plaguing problem of water scarcity in the area, a training program for the Sarpanches of the Lohara block was conducted in early 2013. Information was shared on the importance and methods of water conservation, government programs on the same, and for keeping cattle in government sheds during the peak summer days. Subsequently, 2 such awareness programs were conducted involving 120 gram panchayat members, SHG members and local leaders in two batches of 60 each.

In November, a team of elected members of Legislative Assembly, along with the government officers from the Department of Health visited SPARSH as part of the Study tour for all MLAs. Mr. Vaijnath Shinde Patil - MLA - latur, Mr. D. Bansode - President - Zilla Parishad, latur, Dr. Ashpak Ahmad - Deputy Director Health Services, Dr. Kore - Civil Surgeon & Dr. Dhanve - District Health Officer from Latur visited SPARSH. The team was given a presentation on the hospital, and all records were inspected by the team, The visiting team was impressed with the work done, and appreciated all the efforts undertaken by SPARSH.

SPARSH played a major role with the District Health Authority, Government of Maharashtra in the District Project Implementation Plan for the year 2013-14.

A State level review meeting was held for the Save Our Sisters program on anti-human trafficking initiatives of Save The Children India. The network NGOs from Delhi, Sangli, Osmanabad, Amravati and Latur participated in the same wherein details of work done till date was reviewed along with the action plan for future for strengthening the work on prevention.





★ Moments ★ of pride!

The SPARSH rural hospital in Osmanabad has been awarded the State Level Punyashlok Aahilyadevi Holkar Puraskar by Department of Women & Child Development, Govt. of Maharashtra for the Best Performance & Best Services to Mother & Child. The Minister of Women & Child Welfare Smt. Varsha Gaikwad, State Minister Smt. Foujiya Khan, Secretary Ministry of Women & Child Welfare Mr. Ujwal Ukke & Commissioner Mr. Rajendra Chavan handed over the award to Chief Functionary Mrs. Isha Mehra.

Having years of expertise in working on Early Child Care and Development, and as a first step towards developing a resource centre, a training and resource centre is being set up in Mahad with support from the Consulate of Japan. This Training and Resource Centre aims at building capacities of local communities especially women, adolescents and youth for socio-economic status and better living conditions. The resource center intends to train the youth and women on different skills and vocations and disseminate the knowledge gained on ECCD.

P.R.I.D.E. India is now a part of CHILDLINE India Network and is executing Child line projects under Integrated Child Protection Scheme. It is declared as a Sub-Centre organization at Raigad, Maharashtra for running child line projects under Integrated Child Protection Scheme, a project of the Ministry of Women and Child Development in partnership with State Governments, NGOs and the Corporate Sector.

Sangita's Story

“I am 18 yrs old & native to Ekurgawadi near Omerga. Two years back my parents died, leaving me to take care of my 13 year old sister and 7 year old brother. My relatives were not ready to take care of my brother & sister. My brother Mahadev has lost the immunity due to the fact that he suffers from HIV AIDS. I came to know about the P.R.I.D.E. INDIA - Community Care Centre at Sastur, and I admitted my brother and was so relieved to see him receive the care that he needed! The kindness with which the services are dispensed make a difference. Because he recovered under their care, he was rehabilitated at the Sahara School located at Kalamb village. Today he studies in the 6th std. & is doing well. Due to the intervention of the P.R.I.D.E. India team I have been able to marry a person named Mr. Yashwant Gambhire at Dhoki village. I am very happy with my husband & I am taking care of my sister & brother! I want to thank P.R.I.D.E. India – specially the Community Care Centre for giving me the happy life that seemed so far from reach just a few years ago. – Sangita, Ekurgawadi village, Maharashtra

“Supporters” Speak

SPARSH Hospital is a blessing for the rural poor. If similar health services are provided for rural people across Maharashtra, the State will definitely stand first in ranking at the national level. All staff of SPARSH including doctors are very committed. I would like to thank especially Mr. Joshi and wish the team continues such service.

- **Vidya Sagar Hirmukhe, Deputy Director, Finance, National Rural Health Mission, Maharashtra**

We got an opportunity to serve the community through the Ayush Camp organised by SPARSH. I have been to many camps earlier but Camps organised by SPARSH is much organised and quality of services rendered to poor patient is excellent. We look forward to support these kinds of camps.

- **Dr. Parshurame Satish, Ayurvedic Doctor, Solapur Medical College**

Thank you once again for inviting us to Sastur and also the SPARSH hospital for organising Musco - Skeletal surgical camp. I have been coming to India since the end of 2004 and have found the experience most enjoyable and rewarding. It is a special pleasure to come here where the hospital and all its staff are of the highest standard making our stay and work especially enjoyable. The operating staff have adopted to orthopaedics very well and are gaining confidence. The surgeries would be of little use without such dedicated help. The patients also seem very happy to come here and I am sure are well catered for. I am sure that there will be future occasions when we will return as long as there is work to be done.

- **Dr. John Cleg, Rotary Club of London.**

“Beneficiaries” Speak

My eldest son was sponsored till the 10th grade by P.R.I.D.E. India, but my other two children also benefited from the educational program. I was given assistance for setting up a shop, with a loan from Vipul Credit Co-operative Society. P.R.I.D.E. India also gave my daughter medical assistance for her surgery in terms of expenses. My son is doing his BCA in Pune, daughter is pursuing a diploma in education, and my younger son has finished his 10th. This whole culture of education in my family has been instilled by P.R.I.D.E. India.

- **Supriya Sudhakar Sutar, Sutrakond, (Mahad)**

I used to force my husband, associated with the military, to take me wherever he was posted, but he would send me back every few months to take care of his parents. Thoughts of divorce, and even suicide crossed my mind several times, until I saw my village transform owing to the interventions by P.R.I.D.E. India.

- **Sharda Krushna Bhave, Owale**

Villagers have become aware on care and check up required for pregnant mothers through the SPARSH Mobile Medical Unit. The unit provides appropriate diagnosis and treatment for other illness as well. Community especially the pregnant mothers have developed trust on the services provided through this mobile hospital.

- **S. M. Madne, Sarpanch, Morda Village, Tadbadla**

Sparsh Mobile Medical Unit has served me well through timely and appropriate guidance during my pregnancy. Now I and my family have lot of trust in the services it provides and as per the guidance I am looking forward for delivering my child in a Hospital.

- **Sangeeta Sankar Shinde, Village Modwa**

The Year in Pictures



Awareness Campaign on HIV prevention



Boy standing on his own feet after treatment in deformity correction camp



Educational Material being given to Sponsored children



Foundation Laying for Training Center at Mahad



Awareness Rally against female infanticide



Local MLA at Panchayati Raj training organised for women



Exposure visit for youth



Celebration of Independence day at Muktaashala



Opening of Musco skeletal deformity camp by Dr. John Cleg

The Year in Pictures



Partnering with The Consulate General of Japan for construction of training Centre in Mahad



Receiving Ahilyabai Holkar Puraskar for Best Services for Mother and Child Health



Revision of agreement of support with The Government of Maharashtra for SPARSH hospital



Mobile Medical Unit reaching out to the interior villages



Post Natal Care ward - Construction in progress



Quarters for Nurses- Construction in Progress



Presenting Proposed training centre plan to The Consulate General of Japan



Sponsors interacting with children in Mahad



Drawing competition for tribal children on independence day supported by Thomas Cook

The Year in Pictures



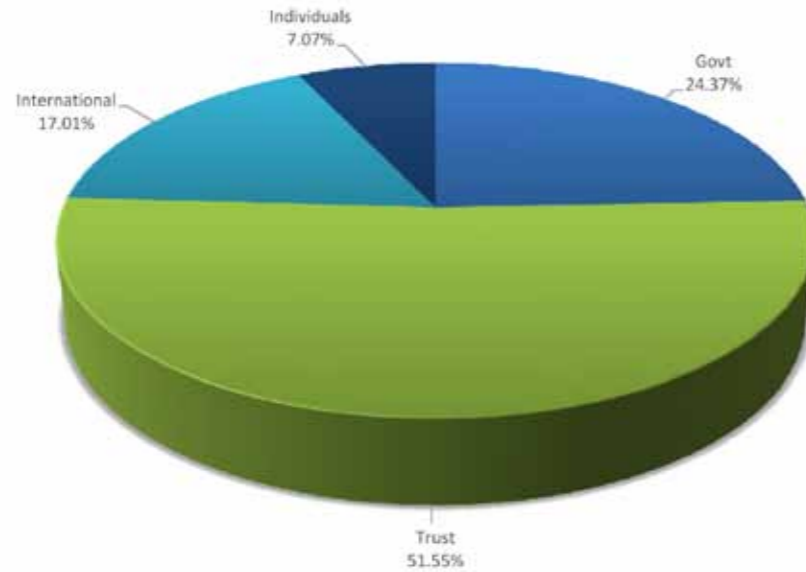
Youth Melava on different career options held at Mahad

Partners in Change

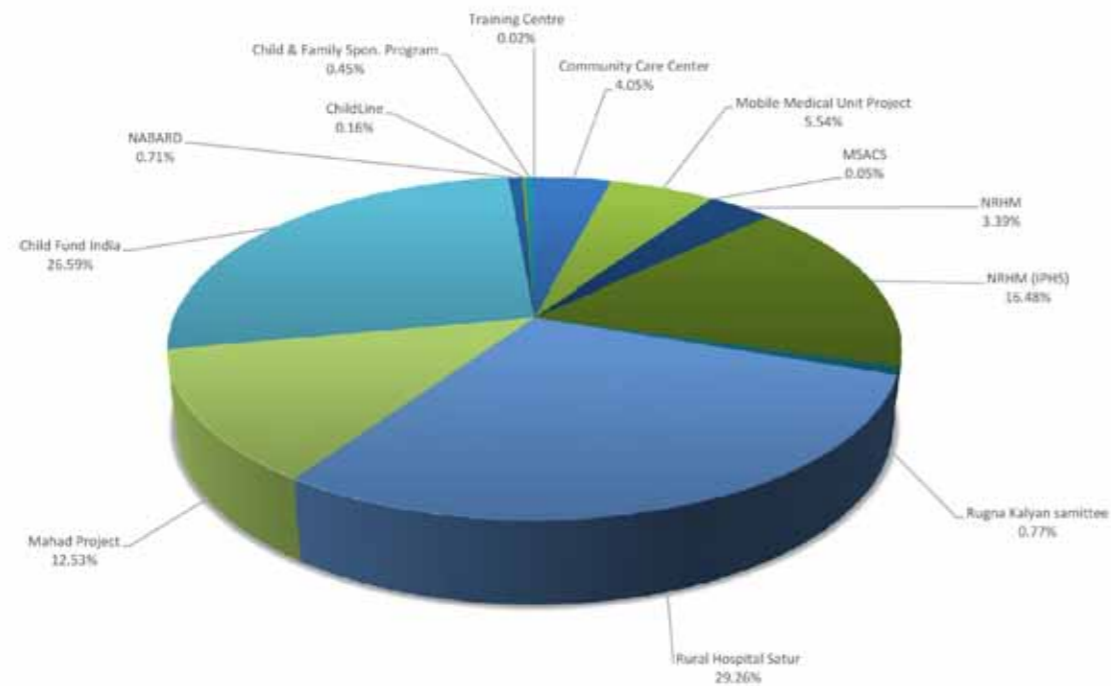


Financial Statement 2012-2013

Sources of Income



Utilization of Funds



THE BOMBAY PUBLIC TRUSTS ACT, 1950
SCHEDULE VIII [Vide Rule 17 (1)]

Name of the Public Trust THE PRIDE INDIA
Balance Sheet as at 31st March, 2013.

Registration No. F - 7662 (BOM)
(Amount ₹)

FUNDS & LIABILITIES	ANNEXURE	Total	PROPERTY AND ASSETS	ANNEXURE	Total
Trust Funds or Corpus			Immovable Properties		
Balance as per last Balance Sheet		-	Balance as per last Balance Sheet	E	2,31,12,651
Add : Corpus Donation		-	Less : Depreciation for the year		11,64,088
					2,19,48,563
Other Earmarked Funds:	A		Furniture and Fixtures	E	
(Created under the provisions of the trust deed or scheme or out of the income)			Balance as per last Balance Sheet		2,77,218
Any other Fund :			Less : Depreciation for the year		27,722
Building Fund		3,66,66,155			2,49,496
		3,66,66,155	Other Fixed Assets	E	
Liabilities for			Balance as per last Balance Sheet		10,97,477
Expenses	B	3,65,557	Additions during the year		2,24,722
Advances	C	28,07,523	Less : Depreciation for the year		2,71,952
Other Liabilities	D	20,532			10,50,247
		31,93,612	Advances	F	
Income & Expenditure Account			Others		44,198
Balance as per last Balance Sheet		10,58,882			44,198
Add : Adjustments during the year		-	Income Outstanding	G	
Less : Appropriation, if any		-	Grant-in-Aid from Government of Maharashtra		53,04,000
Add : Surplus as per Income & Expenditure Account		35,18,917	Interest		33,402
		45,77,799			53,37,402
		4,44,37,566	Cash and Bank Balances	H	
			Saving Account with Banks		1,53,49,825
			Fixed Deposits		4,52,124
			Cash on Hand		5,711
			With the trustee		-
			With the manager		-
					1,58,07,660
		4,44,37,566			4,44,37,566

Significant Accounting Policies - Annexure O

The above Balance Sheet to the best of my/our belief contains a true account of the Funds and Liabilities and of the Property and Assets of the Trust.

For and on behalf of the Board of Trustees
For **THE PRIDE INDIA**

Rahul Kadri
RAHUL I. KADRI
TRUSTEE

Isha Mehra
ISHA MEHRA
TRUSTEE



In terms of our report attached
For **L. K. MANJREKAR & CO.**
Chartered Accountants
(Registration No. 106006W)
L. K. Manjrekar
L. K. MANJREKAR
PROPRIETOR
(M. No. 30737)

Mumbai, 28th September, 2013.

Mumbai, 28th September, 2013.

THE BOMBAY PUBLIC TRUSTS ACT, 1950
SCHEDULE IX [Vide Rule 17 (1)]

Name of the Public Trust THE PRIDE INDIA
Income and Expenditure Account for the year ended 31st March, 2013.

Registration No. F - 7662 (BOM)
(Amount ₹)

EXPENDITURE	ANNEXURE	Total	INCOME	ANNEXURE	Total
To Expenditure in Respect of Properties			By Interest:	I	
Rates, Taxes, Cesses		15,614	Accrued		20,664
Repairs and Maintenance		2,33,620	Realised		2,98,776
Insurance		-			3,19,440
Depreciation (by way of provision or adjustment)		-			
To Establishment Expenses	M	29,79,600	By Donation in Cash or Kind	J	2,38,27,028
To Audit Fees		1,46,068	By Grants	K	89,93,013
To Sundry Balances Written off		-	By Income From Other Sources	L	24,18,761
To Expenditure on objects of the trust	N		By Sundry Balances Written Back		62,555
Religious		-			
Educational		1,33,02,767			
Medical Relief		1,39,60,450			
Relief of poverty		-			
Other Charitable Objects		-			
To Depreciation	E	14,63,762			
To Surplus carried over to Balance Sheet		35,18,917			
		3,56,20,798			3,56,20,798

Significant Accounting Policies - Annexure O

For and on behalf of the Board of Trustees

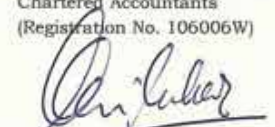
For THE PRIDE INDIA


RAHUL I. KADRI
TRUSTEE


ISHA MEHRA
TRUSTEE



In terms of our report attache
For L. K. MANJREKAR & CO
Chartered Accountants
(Registration No. 106006W)


L. K. MANJREKAR
PROPRIETOR
(M. No. 30737)

Mumbai, 28th September, 2013

THE PRIDE INDIA

ANNEXURES TO FINANCIAL STATEMENTS FOR THE YEAR ENDED 31ST MARCH, 2013.

(Amount in ₹)

As at
31.03.2013

ANNEXURE A : OTHER EARMARKED FUNDS

Sastur Hospital Building Fund	2,99,26,000
Training Centre Building Fund:	
Add : Donations from Consulate General of Japan	67,40,155
	3,66,66,155

ANNEXURE B : LIABILITIES FOR EXPENSES

Amount payable to	
Sharmila Khanna	1,51,686
L. K. Manjrekar & Co.	1,46,068
Telephone & Electricity Expenses	38,741
Deeya Nanda	25,862
Subhadra Anand	3,200
	3,65,557

ANNEXURE C : LIABILITIES FOR ADVANCES

Tata Social Welfare Trust	15,75,000
Christian Children's Fund	12,32,523
	28,07,523

ANNEXURE D : OTHER LIABILITIES

Duties & Taxes	
Tax Deducted at Source	20,532
	20,532

ANNEXURE F : ADVANCES

Others	
Prepaid Expenses	37,889
Tax Deducted at Source	3,784
Deposit	
Maharashtra State Electricity Distribution Co. Ltd	2,525
	44,198

(A+B)

ANNEXURE G : INCOME OUTSTANDING

Interest Accrued on Fixed Deposits	33,402
Grant-in-Aid from Government of Maharashtra	53,04,000
	53,37,402



ANNEXURES TO FINANCIAL STATEMENTS FOR THE YEAR ENDED 31ST MARCH, 2013

ANNEXURE E : FIXED ASSETS

Sr. No.	Particulars	Rate of Depreciation (%)	Opening WDV as on 1-4-2012	Additions utilised for		Deductions during the year	Total	Depreciation	Closing WDV as on 31-3-2013
				> 180 days	< 180 days				
				(Amount in ₹)					
IMMOYABLE ASSETS:									
I	Buildings	5	2,30,02,950	-	-	-	2,30,02,950	11,50,148	2,18,52,802
II	Training Centre	20	69,701	-	-	-	69,701	13,940	55,761
III	Leasehold Land	NA	40,000	-	-	-	40,000	-	40,000
FURNITURE & OTHERS:									
I	Furniture & Fittings	10	2,77,218	-	-	-	2,77,218	27,722	2,49,496
II	Plant & Machinery	15	2,85,165	48,700	72,749	-	4,06,614	55,536	3,51,078
III	Vehicles	15	5,39,531	-	-	-	5,39,531	80,930	4,58,601
IV	Equipments	40	2,68,375	24,187	79,086	-	3,71,648	1,32,842	2,38,806
V	Computers & Computer Softwares	60	4,406	-	-	-	4,406	2,644	1,762
TOTAL			2,44,87,346	72,887	1,51,835	-	2,47,12,068	14,63,762	2,32,48,306

ANNEXURES TO FINANCIAL STATEMENTS FOR THE YEAR ENDED 31ST MARCH, 2013.

(Amount in ₹)

As at
31.03.2013

ANNEXURE H : CASH & BANK BALANCES

In Saving Bank Accounts

Dena Bank A/c No.:

070810003811 4,32,885

070810003812 1,621

070811001029 8,234

HDFC Bank Ltd. A/c No. 2401450000013 660

ICICI Bank A/c No. 055501001262 18,993

State Bank of India A/c No.:

3277289069 67,39,605

10194649651 30,02,750

32867738160 15,75,000

11363133152 12,88,068

31931981802 1,281

30701440646 288

Maharashtra Gramin Bank A/c No.:

54426000132 4,81,567

54426010254 4,11,185

54426013925 2,39,857

Bank of Baroda A/c No. 041310100004155 20,500

The Mahad Co-Operative Urban Bank Ltd. A/c No.

16501 11,07,894

Bank of India A/c No. 121510100014262 19,438

A **1,53,49,825**

Fixed Deposits with Banks:

ICICI Bank Ltd. 3,00,000

Maharashtra Gramin Bank 1,41,124

The Mahad Co-Operative Urban Bank Ltd. 11,000

B **4,52,124****(A+B)** **1,58,01,949**


THE PRIDE INDIA

ANNEXURES TO FINANCIAL STATEMENTS FOR THE YEAR ENDED 31ST MARCH, 2013.

	(Amount in ₹)
	Year Ended 31.03.2013
ANNEXURE I : INTEREST	
Accrued	
Fixed deposit with Banks	20,664
A	20,664
Realised	
Saving Bank Interest	2,84,900
Fixed deposit with Banks	13,876
B	2,98,776
(A+B)	3,19,440

ANNEXURE J : DONATIONS RECEIVED IN CASH OR KIND

Donations from:	
Christian Children's Fund	91,06,576
Save the Children India	55,04,594
Nikunj P. Jhaveri	11,43,000
Atelier Consultants	18,00,000
Cipla Foundation	27,00,000
Kadri Foundation	5,00,000
Abhay Raj Kapoor	1,94,000
Aquamarine	1,50,000
Rriso	1,50,000
Vikram Phadnis Clothing India Pvt. Ltd.	1,50,000
Basta	1,50,000
Yunysha Jewels	1,25,000
Diamantina Fine Jewels LLP	1,25,000
Dynasty Jewels Pvt. Ltd.	1,25,000
Designs INC	1,23,750
Thomas Cook India Ltd.	96,541
Sunil Bhagwan Chandiramani	90,000
Jyoti Gwalani	75,000
Atosa	75,000
Astec Valves & Fittings Pvt. Ltd.	75,000
Zooni	75,000
Kantilal Karia & Co.	75,000
Fuschia & Orange	75,000
Armaan	75,000
Studio Avasar	75,000
Kin Khwab	75,000
Pernia Qurehi Consultancy Pvt. Ltd.	75,000
Indiamco	75,000
SNS Fashions	75,000
Aharin India	75,000
Rohita & Deepa Designs Pvt. Ltd.	75,000
Sonia Mahajan	75,000
MRA Enterprises Pvt. Ltd.	75,000



THE PRIDE INDIA

ANNEXURES TO FINANCIAL STATEMENTS FOR THE YEAR ENDED 31ST MARCH, 2013.

	(Amount in ₹)
	Year Ended 31.03.2013
ANNEXURE J : DONATIONS RECEIVED IN CASH OR KIND (CONTD....)	
Monica Bhayana	75,000
Childline India Foundation	67,500
Bindu Shrikant Zaveri	40,000
Pazzazz	37,500
Bill Desk Contribution	22,472
Hans Kosch	20,000
Sangeetha Mehra	18,000
Neeraj Bisht	18,000
Venkata Ravi Kumar Chandaram	17,555
Amishi Doshi	15,000
Mahendra Pal Singh	13,500
Randommotion Advertising Pvt. Ltd.	5,678
General Donations	43,363
	2,38,27,028

ANNEXURE K : GRANT RECEIVED

National Rural Health Mission	19,47,139
Public Health Department	53,04,000
Karnataka Health Promotion Trust	16,44,774
Janani Suraksha Yojana	97,100
	89,93,013

ANNEXURE L : INCOME FROM OTHER SOURCES

Other Income:	
Fees Collected from Sparsh Hospital	17,34,173
Canteen Collection	6,46,419
Award from Women & Child Department, Pune	25,001
Miscellaneous Income	13,168
	24,18,761

ANNEXURE M : ESTABLISHMENT EXPENSES

Fund Raising Programme:	
Araaish Expenses	5,74,643
Solar Light Campaign	5,31,804
Canteen Expenditure	4,88,865
	15,95,312



THE PRIDE INDIA

ANNEXURES TO FINANCIAL STATEMENTS FOR THE YEAR ENDED 31ST MARCH, 2013.

(Amount in ₹)

Year Ended
31.03.2013

ANNEXURE M : ESTABLISHMENT EXPENSES (CONTD....)

Others:

Personnel Cost	3,77,700
Professional Fees	3,73,132
Travelling Expenses	2,77,301
Electricity Expenses	51,335
Office Expenses	46,622
Repairs & Maintenance	45,245
Registration Charges	38,889
Bank Charges	35,114
Printing & Stationery	32,098
Telephone Expenses	15,900
Other Expenses	90,953

B 13,84,288

(A+B) 29,79,600



THE PRIDE INDIA

ANNEXURES TO FINANCIAL STATEMENTS FOR THE YEAR ENDED 31ST MARCH, 2013

ANNEXURE N : EXPENDITURE ON OBJECTS OF THE TRUST

(Amount in ₹)

Sr. No.	Particulars of Project	Grand Total
1	Expenses of Child Fund India Sponsorship Project, Mahad	92,03,761
2	Expenses of Rural Development Project, Mahad	43,06,460
3	Expenses of Project for Promotion & Linkages of SHGs, Mahad	2,51,722
4	Health Care Expenses of Rural Development Project, Mahad	10,540
5	Operational Expenses of SPARSH Rural Hospital, Sastur Village, Osmanabad	1,01,04,097
6	Expenses of Community Care Centre Project for Persons Living with HIV AIDS at SPARSH Rural Hospital, Sastur Village, Osmanabad	14,29,885
8	Expenses of Mobile Medical Unit	19,56,752
	Grand Total	2,72,63,217



1-M



THE BOMBAY TRUST ACT, 1950
SCHEDULE IX C
(Vide Rule 32)

Statement of income liable to contribution for the period ending 31st March, 2013.

Registration No. : F - 7662 (BOM)
Name of the Public Trust : THE PRIDE INDIA

(Amount in ₹)

I. Income as shown in the Income and Expenditure Account (Schedule IX)		35,620,798
II. Items not chargeable to Contribution under Section 58 and Rule 32;		
1) Donation received from other Public Trust and Dharmadas	6,072,094	
2) Grants received from Government and Local Authorities	8,993,013	
3) Interest on Sinking or Deprecation Fund	NIL	
4) Amount spent for the purpose of secular education	13,302,767	
5) Amount spent for the purpose of medical relief	13,960,450	
6) Amount spent for the purpose of veterinary treatment of Animals	NIL	
7) Expenditure incurred from donation for relief of distress caused by scarcity, drought, flood, fire or other natural calamity	NIL	
8) Deductions out of income from lands used for agricultural purposes:		
a) Land Revenue and Local fund Cess	NIL	
b) Rent payable to superior landlord	NIL	
c) Cost of production, if lands are cultivated by trust	NIL	
9) Deduction out of income from lands used for Non-Agricultural purposes:		
a) Assessment, Cess and other Government or Municipal Taxes	NIL	
b) Ground rent payable to superior landlord	NIL	
c) Insurance premia	NIL	
d) Repairs at 10 percent of gross rent of building	NIL	
e) Cost of collection at 4 percent of gross rent of building let out.	NIL	
10) Cost of collection of income or receipt from securities, stocks, etc., at 1 per cent of such income	NIL	
11) Deduction on account of repairs in respect of buildings not rented and yielding no income, at 10 per cent of the estimated gross annual rent.	NIL	
Gross Annual Income chargeable to contribution ₹.		42,328,324
		NIL

Certified that while claiming deduction admissible under the above Schedule, the Trust has not claimed any amount twice, either wholly or partly, against any of the items mentioned in the Schedule which have the effect of double-deduction.

For **THE PRIDE INDIA**

Address : 4 - C, Swapnalok, 47 Lady Jagmohandas Marg, Mumbai 400 036.

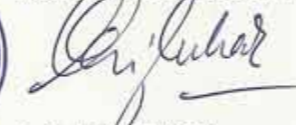

RAHUL I. KADRI
TRUSTEE


ISHA MEHRA
TRUSTEE



For **L. K. MANJREKAR & CO.**

Chartered Accountants
(Registration No. 106006W)



L. K. MANJREKAR
PROPRIETOR
(M. No. 30737)
Mumbai, 28th September, 2013.

Mumbai, 28th September, 2013.



S F 9, G Block, Next to American School of Bombay, Bandra Kurla Complex,
Bandra (East), Mumbai - 400 098. Tel: 91-22-2652 06 01 / 02;
Fax: 91-22-2652 06 04; Email: contactus@prideindia.org

Reg. No. F - 7662 (BOM) of 22nd July 1982

www.prideindia.org